

NORTHERN

L I G H T S

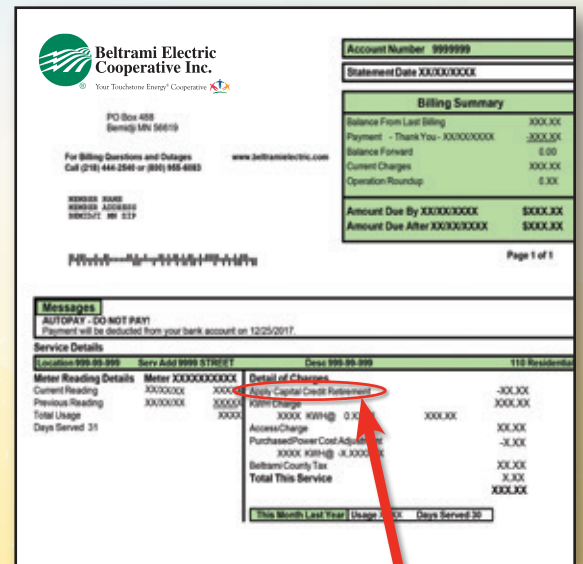
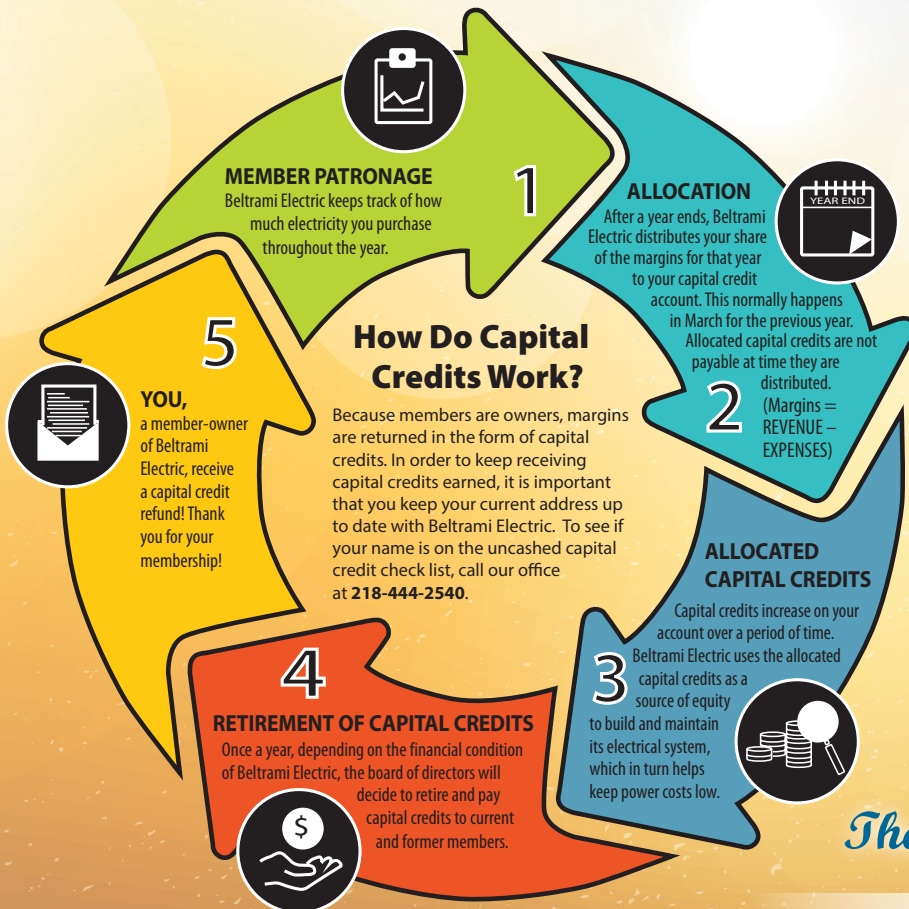


December 2019

As a **MEMBER** of Beltrami Electric, **YOU** get the credit!

When you signed up to receive electric service from Beltrami Electric, you became a member of an electric cooperative. While investor-owned utilities return profits to investors and stockholders, Beltrami Electric Cooperative is a member-owned, not-for-profit cooperative, and we allocate excess revenue to members as “capital credits” and retire – or pay – them when the co-op’s financial condition permits.

It **PAYS** to be a member-owner of Beltrami Electric Cooperative! Earning and receiving capital credits is just one of the benefits of co-op membership. This year the board of directors for Beltrami Electric has approved of retiring and paying more than \$1.1 million in capital credits and more than \$200,000 in estate retirements to former members, for a total retirement of more than \$1.3 million in 2019.



Current members who receive a capital credit retirement will see a credit on their statement in late November or early December (depending on the billing cycle). A credit applied to a statement will be listed as “Apply Capital Credit Retirement” under the Detail of Charges.

Thank you for your membership!

Northern Lights (USPS 016488), Vol. 66, No. 12

Northern Lights is published monthly by Beltrami Electric Cooperative Inc., 4111 Technology Drive N.W., Bemidji, Minnesota 56619-0488. Subscription rate \$5. Periodicals postage paid at Bemidji, MN 56601.

Postmaster: Please send address corrections to Beltrami Electric Cooperative Inc., P.O. Box 488, Bemidji, Minnesota 56619-0488.

Office Hours: 8 a.m. to 4:30 p.m.
Monday – Friday

Member Service: 218-444-2540
or 1-800-955-6083

www.beltramielectric.com

Board of Directors

Chair	Rick Coe, DISTRICT 6 (Minnkota Director)
Vice Chair	John Lund, DISTRICT 7
Secretary	Murl Nord, DISTRICT 1 (Square Butte Director)
Treasurer	Judy Honer, DISTRICT 9
Directors:	Charlie Perkins, DISTRICT 2; Charles Parson, DISTRICT 3; Craig Gaasvig, DISTRICT 4; Robert Wallner, DISTRICT 5; Sue Kringen, DISTRICT 8
President and CEO	Jared Echternach
Editor	Angela Lyseng

This institution is an equal opportunity provider and employer.

Minnesota State Electrical Inspectors

Beltrami County

Wade Koons

218-255-3011 - wade@kooninspections.com

Cass and Hubbard Counties

Steve Schauland

218-652-2213 – Fax: 218-333-0451

These are the inspectors covering the area served by Beltrami Electric. They can be reached by phone Monday through Friday between 7 and 8:30 a.m. or by fax or email as indicated.

Gopher State One Call

1-800-252-1166 or 811

www.gopherstateonecall.org

Anyone who plans to dig is required by law to notify the state of their intentions at least 48 hours in advance.

All digging requires the 48-hour notification so that buried telephone lines, television cables, pipelines, utility electrical lines, and municipal water and sewer lines can be located to ensure that none will be severed or damaged.

STAY CONNECTED!



Like our page on Facebook



Follow us on Twitter



Visit our YouTube channel



Capital credits and holiday wishes

Jared Echternach, *President and CEO*

Members to receive more than \$1 million in capital credits

I am pleased to report that your board of directors has authorized a general capital credit retirement of more than \$1.1 million, and more than \$200,000 in estate retirements to former members, for a total retirement of more than \$1.3 million in 2019. Credits will appear on the bills members receive in late November or early December, depending on the billing cycle. Checks to former members are scheduled to be mailed in mid-December just in time for the holiday season.

Each year since 1984, your board of directors has authorized a retirement of capital credits to the membership. This year your board of directors once again authorized a hybrid method, retiring 50% of the remaining co-op allocation from 1994 to wholesale accounts, 50% of the remaining co-op allocation from 1995 excluding wholesale accounts, 50% of the co-op allocation from 2018 excluding wholesale accounts and 3% of the co-op allocation from all remaining unretired years excluding wholesale accounts. Under the hybrid method of retirement, more members and newer members receive one of the great benefits of membership and experience the cooperative difference.

As a member of Beltrami Electric Cooperative, you are also an owner. Any



margins realized at the end of the year are allocated to the members based on the amount of electricity used. We credit this amount on an annual basis to a patronage allocation account in your name. This allocation is held by the cooperative

as equity, which allows us to reduce borrowing costs while maintaining your distribution plant. More than \$24 million has been returned to members in the history of the cooperative.

May your holiday season be merry and bright

The holidays are a time of year that many of us eagerly anticipate. The season is marked by special foods, seasonal decorations and lots of festivities. Right here in Bemidji, we look forward to the annual First City of Lights display!



We cherish carrying on old family traditions and enjoy creating new ones. For me personally, I look forward to more time spent with family and friends.

However, despite the hustle and bustle of the season, the holidays can also offer an opportunity to slow down and reflect. For all of us at Beltrami Electric Cooperative, we are grateful for you, the members of the co-op.

You see, one of our founding principles as a co-op is “Concern for Community.” While our main focus is providing safe, reliable and affordable energy, we want to give back. We want to help our community thrive.

Reflection

In looking back at this past year, I’m grateful that we were able to make a positive impact in the community through programs such as Operation Round Up®, where, thanks to your contributions, we provided grants to 104 different community projects totaling \$86,689. As a result of your generosity, we were able to help many essential programs and services in our community.

We were also grateful for the opportunity to partner with local schools to raise awareness of the importance of electrical safety. This year, we visited with hundreds of students from five schools.

In fact, we continue to work closely with our local high schools to award college scholarships. In 2019, we awarded \$8,000 to local scholars from unclaimed capital credits.

I'm also thankful for the economic

development and job creation our communities have experienced over the past year, including Delta Dental, Magnum Trucking and the new Federal Building in the Technology Park.

There are other ways we can help the community, whether we're providing information about our community solar garden, Northern Solar, our electric vehicle or our energy-saving load management program, or helping you

find ways to save energy at home, we want you to know we're here to help.

As we prepare for next year, we look forward to the opportunity to serve you and the greater community. On behalf of the Beltrami Electric Cooperative family, we wish you a Merry Christmas and Happy New Year!

DIRECTORS COMPLETE BOARD PROGRAMS



Gaasvig completes Credentialed Cooperative Director Program (pictured on the right)

In October, BEC board member Craig Gaasvig received a certificate for completing the Credentialed Cooperative Director Program (CCD). The Credentialed Cooperative Director (CCD) program consists of courses that focus on basic governance knowledge and the essential skills required of cooperative directors. The CCD prepares directors to fulfill their fiduciary duty as elected officials serving on behalf of their membership. Congratulations to Craig on completing the CCD program.

Lund receives Board Leadership Certificate (pictured on left)

In October, BEC board member John Lund was presented the Board Leadership Certificate (BLC). The Board Leadership Program consists of a series of courses focusing in greater depth on specific industry and governance issues. These include issues such as risk management, power supply, parliamentary procedure, technology and policy development. To earn a BLC a director must have completed the Credentialed Cooperative Director (CCD), followed by additional courses covering subjects such as the cooperative business model, bylaws, ethics and political engagement. The BLC helps to ensure cooperative boards have the knowledge and skills relevant to governing electric co-ops. Congratulations to John for completing the BLC program.

Board Meeting Highlights

Beltrami Electric's board of directors conducted its regular monthly meeting Wednesday, Oct. 30, 2019. A quorum of directors was present.

The following reports were given:

- Jeff Wernert, Prime Group, presented the cooperative Cost of Service Study.
- Mac McLennan, Minnkota Power CEO, gave an update on Minnkota Power.
- President and CEO Echternach gave his monthly report, including discussion on September financials, employee achievements and Operation Round Up.
- Arlene Hogquist reviewed the September financial report and reviewed the work order close-outs. She also presented the third quarter balanced performance scorecard and reviewed year-to-date board expenses.
- Rich Riewer gave a presentation on Distribution Line Loss and presented an amendment to the Construction Work Plan.
- President and CEO Echternach presented proposed 2019 general capital credit retirement options.
- Chair Coe appointed the Minnesota Rural Electric Association voting delegate and alternate.

- Directors and the president and CEO shared highlights of meetings attended on behalf of the cooperative and discussed cooperative opportunities and upcoming meetings and events.

The following actions were taken:

- Approved the consent agenda.
- Approved the 2017-2020 Construction Work Plan Amendment.
- Approved the 2019 general capital credit retirement.

The next regular board meeting will be Wednesday, Dec. 18, 2019.

Statement of Operations Year-to-date: September 2019

	September 2018	September 2019
Operating Revenue.....	\$ 41,089,970	\$ 41,974,952
Cost of Purchased Power.....	\$ 28,279,725	\$ 28,378,596
Other Operating Expenses.....	\$ 11,627,112	\$ 11,794,765
Total Cost.....	\$ 39,906,837	\$ 40,173,361
Operating Margin.....	\$ 1,183,133	\$ 1,801,591
Interest Income.....	\$ 221,804	\$ 252,901
Other Margins.....	\$ 604,221	\$ 263,060
Total Margins.....	\$ 2,009,158	\$ 2,317,552
kWh Sold.....	370,756,643	366,959,736
Meters Billed.....	20,982	21,169

Ready to respond

MINNKOTA AND ITS MEMBERS PREPARE FOR WINTER DEMAND RESPONSE, ESTIMATE NORMAL CONTROL HOURS

Northerners remember the January 2019 polar vortex unkindly – cars that wouldn't start, wind that hurt the skin and dangerous overnight lows.

Fortunately for Minnkota Power Cooperative's service territory of eastern North Dakota and northwestern Minnesota, including Beltrami Electric Cooperative, homes and businesses stayed warm as the power stayed on. Energy teams were able to balance overwhelming electricity needs across the region by leveraging the energy market and demand response – a technique that allows a cooperative to temporarily interrupt service to a member's off-peak loads (electric heating, large-capacity water heaters, electric vehicle chargers, etc.) in exchange for a lower electric rate.

"If you have a polar vortex where there's no wind, or the temperatures are so cold that the wind isn't generating, that is going to result in demand response," explained Todd Sailer, Minnkota senior manager of power supply & resource planning. Sailer added that wind generators start to shut down somewhere between 20 and 25 below zero, temperatures that the entire Midwest experienced for multiple days.

"The cold temperatures were over a wider area of the country, which put additional stress on our system. That led to higher electrical needs, which resulted in higher energy costs across the region," Sailer said. "Our demand response program was very helpful in the ability for us to not only manage our costs, but also our consumer electricity needs during widespread emergency weather conditions."

Every winter is different, but the planning team projects this year will bring a normal 200-250 hours of estimated demand response. Minnkota is typically able to cover its demand with its own energy resources. However, there are times during planned generator outages, extreme weather events or low wind supply that Minnkota must buy power.

"When the market prices are high, that's when we initiate demand response. We're doing it to keep costs down," Sailer said.

The demand response system was established to avoid building more generation facilities for peak need that only comes a few times a year. That, in turn, keeps rates low for consumers. By being a part of the off-peak load control program, consumers can also take advantage of an even lower electric rate without any disruption in comfort.

Sailer says those on the off-peak program need to check their backup heating sources to make sure their fuel tanks are full and functioning. Minnkota will run a demand response test in early December, and members should reach out to their power providers with any questions or concerns before extreme weather hits.

"The polar vortex showed that you need to make sure your systems are working properly so that when we end up in those events, everybody is able to get through it safely and without too much inconvenience," Sailer said.

Load management reminder: Daily cycling of electric storage heat

Thermal storage heating is controlled each day from 7 a.m. to noon and 5 p.m. to 11 p.m., from November through April each year. The actual date cycling begins and ends varies each season. This affects members heating with electric thermal storage on the off-peak program, such as thermal storage room units, thermal storage furnaces, slab/in-floor heating and storage water heating. If you have any questions, contact our Energy Services department at **444-2540**.



ATTENTION, HIGH SCHOOL JUNIORS!



Win a Trip of a Lifetime!

This summer, go on a Power Trip!

- To enter the contest, you must be a junior in high school (will be a senior in the fall of 2020).
- Candidates must submit an application, write a 500-word essay and submit two letters of reference from teachers, group leaders or community leaders.
- You and your parents or guardian must be a member of Beltrami Electric Cooperative.
- Applications are available in your school counselor's office or via download at www.beltramielectric.com.
- If you have questions, contact Angela Lyseng, Beltrami Electric Cooperative, at (218) 444-3689.
- The deadline is Friday, Jan. 31, 2019. You can email entries to Angela Lyseng at alyseng@beltramielectric.com or mail a hard copy to Youth Tour Contest, Beltrami Electric Cooperative, P.O. Box 488, Bemidji, MN 56619-0488.
- Check out pictures from the 2019 Youth Tour at <https://tinyurl.com/y3v8nq37>, and learn more about the Youth Tour at NRECA's National Youth Tour website: www.youthtour.coop.

WIN
A WEEK-LONG TRIP
to WASHINGTON DC!

YOUTH TOUR
2020

The Electric Cooperative

Visit historic monuments and museums

Boost your community service and engagement

Join hundreds of young people from across the country

Meet with your U.S. Representatives and Senators

Meet with students from many states on Rural Electric Youth Day

@YouthTourDC

facebook.com/NRECAYouthTour

ESSAY QUESTION: Describe the cooperative business model and how electric cooperatives are different from other electric utilities. Give examples of why this model works for the members it serves.

CLASSIFIEDS

Classified ads rules

- Ads are due by the first of the month prior to publication of the next issue. Example:
 - Ads submitted by Dec. 1 will be published in the January issue.
 - Ads submitted between Dec. 2 and Jan. 1 will be published in the February issue.
- Ads may be submitted via our website at www.beltramelectric.com (preferred).
- Include your name and Beltrami Electric account number on all submissions.
- All ads must be **50 words or fewer** and typed or printed clearly.
- Members may only submit one for sale and one wanted or free ad per issue.
- No real estate, rental, personal or commercial ads will be accepted.
- Ads are published at no charge as space permits on a first-received, first-printed basis, **with no guarantee your ad will appear.**
- Ads are only allowed to be repeated for **three consecutive months** and must be resubmitted each month.
- Editor reserves the right to edit or reject any ad.
- All telephone numbers are presumed to have a 218 area code unless otherwise noted.
- Mail ads to: Beltrami Electric Cooperative, P.O. BOX 488, Bemidji, MN 56619.

For Sale:

KitchenAid classic stand mixer. 4½ qt. bowl, paddle, dough hook, whisk. Works great. \$50. 759-2322.

Brand new, still in the box, Levolor cordless cellular shade. Measures 53 5/8" W by 46 1/4" L. A beautiful grey/ blue. All hardware included. Cost \$360; selling for \$100. Call 556-6776.

7½ foot artificial Virginia Pine Christmas tree. Very good condition. Call 556-8507.

1995 Suburban, good engine, nice wheels and tires, bad transmission. \$500/obo. 368-2593.

Downsizing: Remington trap shooter and two boxes of 90 ea. STS targets, orange dome. Call 556-0653.

Selling a turkey fryer. Only used two maybe three times. Works just fine, everything there except a propane tank. Three meat thermometers and extra fish fry pot with handle. Fryer will cook a 20-lb turkey. Extra fry pot is 10 quarts. Call Ron at 556-4926. Leave a message if I don't pick up. I do not text! Cash only and buyer must pick up at my residence.

Two dining tables. One is 42" x 60" oval shape with two leaves, \$20. The second one is a 42" x 66" cherry veneer rectangular shape with 15" on each end, folds down to a size of 42" X 36." Also has one 12" leaf, \$30/obo. Call 760-8266.

Boys winter jacket 14-16 new w/tag, \$35; ladies Columbia (S) hardly worn, \$35; Cal-

vin Klein down jacket, ladies dark brown (M) worn only few times, \$35; New-never worn Earth Origins shoes 7½ and 8 in box, new \$110, asking \$50 each. Call 368-4973, if no answer leave message.

Vexilar fish finder, FL-20, \$200. Other ice fishing equipment. 835-7484 or 239-0742.

8x12 fish house with 6 holes. Crank-down wheels, insulated floor, propane and battery lights, propane heater, stove top/oven (pizza), rattle reels, bed, cabinets, radio, TV antenna, 80-lb propane cylinder, steel frame, maintenance-free siding, well built. \$3,000/obo. 766-2960.

2013 Yukon XL 4WD 4dr 1500 SLT, 5.3L VORTEC (Z71 Suspension/Trailering Package), silver, 95,000 miles. Clean, one owner, Experian auto check score 95. 2nd and 3rd row seating as new. \$19,900. Call 444-7398.

New handicapped bars, 2 – 24 inch and 1 – 16 inch, \$12. 150-watt industrial high vibration lightbulbs, 12,000 hrs. 647-8514 or 308-1221.

Overhead garage door track only, 7'x9', all hardware, \$20. Toro weed/brush trimmer, needs shaft, \$20. 444-2177.

Diamond Razor Edge compound bow with accessories, \$350. Pelican Colorado 15-ft poly canoe, \$300. Tri-Tronics dog training collar, \$100. Armstrong flute, \$200. Black Itech hockey bag, \$50. 759-0186.

AKC registered Pembroke Welsh Corgi pups available for adoption Dec 10. (In time for Christmas!) Red with white markings, healthy, adorable puppies, raised with lots of love and attention around children and other pets. Call for info 224-3688.

Antique dark stained cherry three-shelf bookcase with glass doors and three small enclosed cabinets across the top. 68" H x 42" W x 13" D. \$200/obo. Last offering. 759-2099.

Outdoor grill: Improve your winter food grilling experience with a 3-burner Weber grill. Excellent condition. Tank included. Made in the USA. \$235. 751-7810, leave message.

1998 Polaris 488 Indy Trail snowmobile. 1997 Polaris 600 XLTSKS snowmobile; Bear Cat LITE 8x10 tilt aluminum trailer, used yearly, low mileage. Asking \$1,500/obo for all. Laporte, Minn. 612-366-5091.

Bosch Kitchen Machine – mixer, kneading arm, wire whips, blender, slicer/shredder, lemon squeezer, \$100. 835-7719.

New pair of draft horse collars, 26". Also have other horse-related items. 647-8630.

Fish house: Truk-Mate, 6½' x 12' wheeled fish house, 6-hole, furnace, 2-burner cook stove, lights, gas and 12V battery. Rod holders, carpet, "woody" type interior paneling. \$2,700. 333-1510.

12" Craftsman band saw, \$150. 10" Craftsman portable table saw, \$100. 368-1942.

Arctic Cat El Tigre 5000 snowmobile, \$800. 7-ft heavy-duty fishing sled, \$20. Cast-iron kettle with cover and fry basket, \$15. Ethan Allen solid maple harvest table with six

thumbprint chairs. Set was \$1,200 new, yours for \$500. 586-2884.

Pickup toppers: 1-8-ft, red, 1-small pickup, red. 8-ft green Tonneau cover. Rainbow trailer, snowmobile/ATV, has ramp and sides, make offer. Various trailer house doors, house doors. Trailer house axle w/ tire. Various size truck tires, 16", 15". Transfer case for 2004 V6 Trailblazer. Scrap iron trailer. Various pieces of scrap iron. Some pieces of lumber. 766-5285.

AKC registered Labs, all Fox-Red shade in color. 1-year-old started dogs males/ females, \$600 limited, \$800 full registration. 3-year-old Finished female, genetically cleared and OFA completed, \$3,500. 2-year-old HRC titled male, genetically cleared and OFA completed, \$4,500. Text or call 244-7605.

BowTech Stalker compound bow 36", fiber 3 pos. sight, peep sight, adjust pull length/draw wt, whisker arrow rest, 6-28' carbon fiber arrows w/field tips, quiver, hand mounted mechanical release, case, arm brace, \$350. BowTech Mighty Mite VFT 34" bow, same accessories as above plus extras, \$385. 547-1744.

Wanted:

I am looking for a ukulele for my daughter. She has wanted to learn for a long time. Must be reasonable price. 224-3688.

Wilson steel string, flat top guitar. 368-2593.

I will pet sit for you, your home or mine. Let's meet up so I can meet your pet! Bemidji area. 766-6510.

Free:

Console piano, has good tone. You haul it. 243-3409.



Grant Application Deadline Dec. 27, 2019

To be considered at the January 2020 meeting, grant applications must be received by **Friday, Dec. 27, 2019**. Community organizations and groups may apply for an Operation Round Up® grant by completing and returning an application form. Grant applications are available at the BEC office or by visiting our website at www.beltramelectric.com.



Energy Efficiency Tip of the Month

Laundry Tip: Dry towels and heavier cottons separately from lighter clothing. You'll spend less time drying the lighter-weight items.

Source: energy.gov



Outdoor Holiday Lighting

Safety Tip

Make sure you are using outlets with GFCI protection when decorating outdoors.

Safe
Electricity.org



Celebrate with savings!

Buy energy efficient
Christmas lights and decorations
LED LIGHTING REBATE

How to apply:

1. Purchase LED Christmas plug-in (not battery operated) lights and decorations in 2019.
2. Complete this rebate form and submit it to Beltrami Electric Cooperative by Dec. 31, 2019, with a copy of your sales receipt and the packaging showing the number of lights per string. ENERGY STAR® LEDs are recommended.
3. Select the appropriate rebate in the box below. **(Rebate cannot exceed 50% of cost. Maximum of five strings per customer.)**



NOTE: THIS REBATE WILL BE APPLIED AS A CREDIT ON YOUR ELECTRIC BILL.

Name _____ City/Zip _____

Account # _____ Phone # _____

Address _____

Number of Strings	Rebate per String	Total Rebate
Fewer than 99 lights	\$3	
100-199 lights	\$6	
200-299 lights	\$9	
Greater than 300 lights	\$12	

Mail to: Beltrami Electric Cooperative • P.O. Box 488 • Bemidji, MN 56619-0488



Need help paying your electric bill?

The Energy Assistance Program (EAP) helps pay for home heating costs and furnace repairs for income-qualified households. We urge you to contact them immediately to avoid disconnection if you feel you are eligible for aid. (Eligibility is based on energy costs, household size and the three most recent months of income.)

Are you a senior living on a fixed income or suffering from a temporary financial shortfall? Then the following agencies may be able to assist you with your electric bill.

Bi-CAP

6603 Bemidji Ave N, Bemidji, MN 56601
218-751-4631

Kootasca

201 NW 4th St., Suite 130,
Grand Rapids, MN 55744
218-999-0800

Leech Lake

115 6th St., Cass Lake, MN 56633
218-335-3783

Mahube

120 North Central Ave,
Park Rapids, MN 56470
218-732-7204

Red Lake

15525 Mendota Ave, Redby, MN 56670
218-679-3350

EAP services may include: payment of energy bills, help with utility disconnections or fuel deliveries, repair or replacement of homeowner's broken heating systems, energy efficiency and more.

2020 EAP Income Guidelines

Household Size	3-month Maximum	Household Size	3-month Maximum
1	\$6,761	5	\$15,084
2	\$8,842	6	\$17,164
3	\$10,923	7	\$17,554
4	\$13,003	8	\$17,944

Visit <https://mn.gov/commerce/consumers/consumer-assistance/energy-assistance/> for more EAP income guidelines and program information.



**Beltrami Electric
Cooperative Inc.**

® Your Touchstone Energy® Cooperative 

4111 Technology DR NW
PO Box 488
Bemidji, MN 56619-0488
218-444-2540 • 800-955-6083
www.beltramielectric.com

Electrical safety tips for the **HOLIDAY SEASON**



The holiday season brings families and loved ones together for celebration. Whether hosting an event or traveling to someone's home, the holidays take a lot of preparation. During the hustle and bustle, remember to make safety a priority to help ensure that nothing spoils the fun, and make your holiday a happy one.

“As you make final preparations for holiday and family celebrations, take simple safety steps to help ensure a safe and bright holiday season,” advises Molly Hall, executive director of the Energy Education Council and its Safe Electricity program.

Remember to always turn off decorative holiday lights before going to bed or leaving home. A timer can help make sure this happens.

Also, take care to not overload extension cords or outlets. Electric overloads can cause shocks and start fires.

Ensure that fresh-cut trees as well as artificial ones are placed away from heat sources such as registers, fireplaces, radiators and televisions, and water a fresh-cut tree frequently.

During the holiday season your home may see increased

traffic, including children and pets. Make sure all electric cords are out of high-traffic pathways and areas. Do not run cords through doorways or hide them under rugs or carpets. Do not let children or pets play with light strands or electrical decorations.

The kitchen can be one of the busiest rooms in the house with cooking and baking of holiday treats. Here are some tips to remember when working in the kitchen:

- Stay focused and attentive to baking, brewing and simmering foods.
- Keep cooking areas clean and clear of grease.
- Do not leave combustible items, such as towels or pot holders, near the stove top.
- Never plug more than one high-wattage appliance into a single outlet.
- Make sure outlets near sinks are equipped with GFCIs.
- Always have a working fire extinguisher on hand, and know how to operate it.

If you are traveling for the holidays, please drive safely. If you get into an accident with a utility pole, the safest place is almost always in the vehicle. A downed line does not need to be sparking to be energized. Always assume all low and downed lines are energized and dangerous. Call 911 to have the utility notified immediately. Only exit the vehicle if it is on fire. To do so safely, jump clear of it with your feet together and without touching the vehicle and ground at the same time. Keep your feet together and shuffle or “bunny hop” to safety.

“The EEC-Safe Electricity program wishes everyone a safe and happy holiday season,” adds Hall. Learn more about electrical safety at SafeElectricity.org.