

NORTHERN

L I G H T S November 2024

OPERATION ROUND UP® CONTINUES TO HELP LOCAL ORGANIZATIONS



Beltrami Electric Cooperative's Operation Round Up® program continues to make a significant difference in our communities, demonstrating the power of collective giving. In October, the Beltrami Electric Cooperative Trust Board reviewed 31 grant applications totaling \$80,824, all submitted by nonprofit or community organizations seeking support. With \$41,268.13 in available funds, the board faced the difficult task of selecting which projects would receive grants. After careful consideration, they awarded \$41,268 to 25 deserving organizations.

WHAT IS OPERATION ROUND UP?

Operation Round Up is a voluntary program where Beltrami Electric members round up their monthly electric bills to the nearest dollar. This small contribution – an average of just 50 cents a month, or \$6 a year – creates a fund that directly supports charitable efforts in our communities. Even the maximum annual contribution of \$11.88 may seem small, but when combined with thousands of other members' contributions, it becomes a powerful force for good.

KEY FACTS ABOUT THE PROGRAM

- Funds are kept in a separate trust, not connected to electric accounts.

- A board of five co-op member volunteers manages the program.

- 100% of donations go to local nonprofits and community groups.

- Contributions are tax-deductible and voluntary – members can opt in or out anytime.



Operation Round Up supports a wide range of projects, from youth programs to emergency services and healthcare initiatives. Each dollar helps improve the quality of life for people across our region, proving that small change can make a lasting impact.

GET INVOLVED!

If you're not yet participating in Operation Round Up, consider joining this simple but powerful way to give back to our communities. Together, we can turn small change into a big difference!

Operation Round Up grant recipients listed on page 5.



Beltrami Electric Cooperative Inc.

Your Touchstone Energy® Cooperative 

SMALL CHANGE, *Big Impact in Our Communities*



2025 budget and rate outlook

by Jared Echternach, president and CEO

Your board of directors is in the process of reviewing the 2025 preliminary budget and rates. We expect wholesale power costs to increase in 2025. This will have a significant impact, as wholesale power makes up 70% of our total costs. We will continue to work hard internally to minimize the impact, but at this point an adjustment will be necessary in 2025. The last retail rate adjustment occurred in April 2018, nearly seven years ago!

Think of the things you purchase on a daily or monthly basis: milk, eggs, beef, gasoline or eating at your favorite restaurant. How much have those prices increased over the last seven years? While we're proud we haven't had a rate change in nearly seven years, we're certainly not immune to inflation. For example, the average cost of a wood pole has increased 35% since 2018; underground wire 63%; and transformers 140%. All of these additional costs place tremendous pressure on the cost of your electric service.

Your board of directors has been working hard to analyze our rates to ensure we appropriately recover our costs, and that each rate class is paying its fair share. As part of that process, we engage an independent consultant to perform a Cost-of-Service study. This study provides an unbiased, independent assessment of how our costs are allocated and ultimately how those costs should be recovered through rates.

Cooperative rates are intended to be fair across all rate classes, and your board of directors works diligently under a rate policy designed to ensure fair rates. As a not-for-profit, member-owned cooperative, the only time we adjust rates is when we absolutely must to satisfy our loan covenants and to keep your cooperative financially stable.

Residential electricity use and bills decline

While it may be hard to believe with the level of inflation we have experienced in recent years, residential electricity use and monthly bills have declined. The average residential

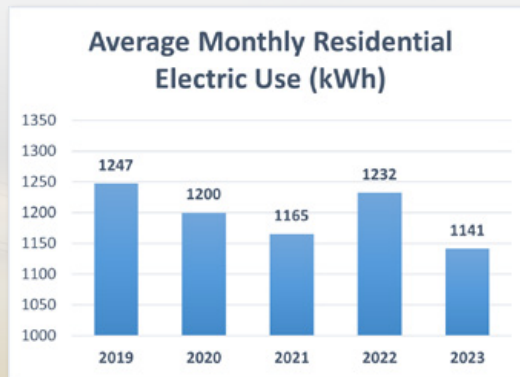
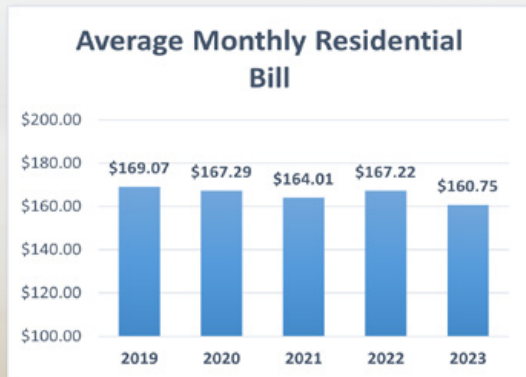
member used 106 fewer kilowatt-hours per month in 2023 than they did in 2019. Correspondingly, the average residential member paid \$8.32 less per month for electricity in 2023 than they did in 2019.

Residential demand

Residential members may have noticed a new line item on their bills titled Demand. This began appearing with the August billing cycle and presently has no charge. Commercial members are acutely familiar with the demand component of their bill as they have been billed in that fashion for decades. So, what is demand and why is it a line item on your bill? Demand measures the highest amount of power used at one time each month. Running more appliances and devices at the same time increases your demand, and a demand charge aligns this peak use with the highest grid costs. A demand charge helps members control their electric bills by reducing peak use, and it helps BEC lower overall peak demand. A demand charge more accurately reflects how we are billed for the cost of wholesale power. It also lets members control their bills by spreading out their electricity use throughout the day.

Please know that as a not-for-profit electric cooperative owned by its members, Beltrami Electric's board of directors only increases rates when they absolutely must to remain solvent and meet our lenders' financial covenants. Your board of directors and employees take this responsibility seriously, as we too are members. Approximately 70% of our costs are directly related to purchasing wholesale power over which we have little control. The remaining 30% is internal, some of which is controllable, some of which is not. Your board of directors and employees have done an excellent job of keeping those controllable costs in check. I can assure you as a cooperative we will continue to look for ways to manage costs for our members, striving to provide value to them without sacrificing safety or service reliability. We will communicate any changes in advance so members have

time to prepare and budget. In addition, we will continue to promote ways members can save on their energy bill through our conservation and efficiency programs.



DAV honors veterans with \$11,100 donation to Beltrami Electric members

In a heartfelt tribute to disabled veterans, Commander Gene Schwantes of the North Central Chapter #7 of the Disabled American Veterans (DAV) of Minnesota recently presented a generous check totaling \$11,100 to Beltrami Electric Cooperative. This donation is earmarked to assist 111 cooperative members who are members of the North Central Chapter #7 disabled veterans.

The contribution comes as part of DAV's commemorative "\$100 for 100 YEARS" initiative, celebrating the organization's centennial anniversary in 2024. In honor of this milestone, \$100 will be credited to the electric accounts of co-op members who are disabled veterans. The credits are expected to appear on members' bills due in October, providing direct financial relief to those who have served the nation.

Founded 100 years ago, the DAV has long supported veterans, and this recent gesture further reflects their ongoing commitment to giving back to those who have sacrificed so much for their country. This program is just one example of how the DAV continues to make a tangible impact in the lives of veterans across Minnesota.



Janice Renner, BEC member services lead, accepts a check from Commander Gene Schwantes for co-op members' accounts.



BOARD MEETING HIGHLIGHTS

The Beltrami Electric board of directors conducted its regular monthly meeting Wednesday, Sept. 25, 2024. A quorum of directors was in attendance.

The following reports were given at the meeting:

- President and CEO Echternach and the board discussed recent safety successes and observations.
- President and CEO Echternach made his monthly report, including Bemidji Steel tour, economic development update, Operation Round Up, EV car show, rate discussion and budget projections and process.
- Arlene Hogquist presented the August financial report.
- Arlene Hogquist presented the long-range financial forecast.
- President and CEO Echternach and the directors shared highlights of meetings attended on behalf of the cooperative and discussed upcoming meetings and events.

The following actions were taken at the meeting:

- Approved the consent agenda.
- Appointed Jean Diffley to the Beltrami Electric Cooperative Trust Board (Operation Round Up®).
- Approved director expenses.
- Appointed John Lund, Craig Gaasvig and Bob Wallner to the negotiations committee.

The next board meeting will be held Wednesday, Nov. 27, 2024.

MEMBER PRIVACY – RED FLAGS RULE

Millions of Americans have their identities stolen each year. As a result of that startling statistic, the Federal Trade Commission has developed a regulation called the "Red Flags Rule." The Red Flags Rule requires businesses to develop a program to detect, prevent and minimize the damage that could result from identity theft.

The data privacy of our members is important to us, and as a Beltrami Electric member, you may be asked to provide additional information and identification when you make inquiries on your account, such as verifying the last four digits of your social security number.

A member may complete an Authorized Contact Agreement form to allow us to give account information to others you want to have access to your account. This permits an Authorized Contact to make inquiries on the account to which they are authorized. The Authorized Contact must provide their name, date of birth and the last four digits of their social security number in order to receive account information. While these practices may seem intrusive, please understand that these procedures are in place to protect your member data and prevent the occurrence of identity theft.



FOR JUST THE CHANGE IN YOUR POCKET, YOU CAN MAKE SOME DELICIOUS SLOW-COOKER SOUP OVER FIVE HOURS USING ONE KILOWATT-HOUR.



PAYING PENNIES FOR YOUR KILOWATTS – THAT'S THE VALUE OF ELECTRICITY.



PRACTICALITY PAYS OFF FOR BEC MEMBERS

SO DOES THE POWER OF OFF-PEAK ELECTRIC HEAT



Dan Lundberg has dedicated most of his life to working in Minnesota's north woods – where he's built a career cutting timber, hauling wood and assisting landowners with forest management. As a second-generation logger and the owner of a family-run business, Dan has carried forward a tradition that his children are now part of. His sons and daughter represent the third generation actively involved in the business, continuing the family's legacy in the timber industry. Dan and his wife Arlene will be the first to tell you that logging is not an easy way to make a living. But it's paid the bills over the years – and provided the resources for Dan and Arlene to build a home, a business and life in Solway, just west of Bemidji.

Their home conveys their values, featuring a full-wall mural of a serene forest painted by the late Maureen O'Brien, a handcrafted coffee table cut from the trunk of a tree, and the look and feel of a mid-1980s split-entry home built with hard work, perseverance and personal sweat equity.

INVESTING IN COMFORT – AND CONVENIENCE



Like their business, the Lundbergs invest in their home to keep bills under control and maintain their investment. Not surprisingly, they originally heated with wood. But after 15 years of feeding an outdoor furnace, Dan decided cutting wood for a living was worth the time and effort, but not at home.

"He'd work in the woods, come home and play with more wood," said Arlene. "We gave in."

Dan explained, "I don't replace stuff until I have to. It's just like stuff in business – we don't want to do it, but pretty soon you have to do something."

That was their first heating upgrade – going from an outdoor woodstove to a forced-air furnace with an electric plenum insert. The electric plenum, along with electric slab heat in the basement, heated the home for 26 years.

THERE COMES A TIME...

When it was time to replace the plenum last year, Dan and Arlene again looked at options. They installed a new electric plenum in a new forced-air furnace and added a cold-climate air-source heat pump that makes the heating load even more economical and efficient, and also cools their home in the summer.

"Last summer the old AC went kaput and that was the 'you do something (moment)!' The (*Northern Lights*) newsletter got us thinking about heat pumps and finding out about the rebates for doing it, which is a big thing as much as the stuff costs now," Dan said.

A contractor installed the new heating equipment, but Beltrami Electric's energy experts provided options and advice before the Lundbergs made their heating and cooling decisions – with no strings attached. "I don't think we ever initially thought to call Beltrami Electric," said Arlene. "Your first thought is to call a heating contractor."

The Lundbergs also appreciate BEC's attention to service. "They (BEC) did some repair on the original plenum heater," said Dan. "Other people said, 'Oh you can't get parts for that.' But once we found out that Beltrami Electric could come and fix (electric heating) stuff and just charge for the parts, it's a big deal."

The Lundbergs are pleased with the performance of their recent investment to stay comfortable in their 40-year-old home. And the Value of Electricity rebate from BEC helped drive the decision to make life more comfortable in their home – and business.

"We kind of get stuck in our ways and do things a certain way and don't want to change," said Dan. "But you have to look at opportunities."

"We don't know any different," added Arlene.

For the Lundbergs, it's a practical approach – and philosophy – that's paid off in business, at home and in life.



Editor's note: Visit beltramielectric.com for more information about BEC rebates, off-peak programs, products, energy-efficiency advice and services.

The following organizations were awarded Operation Round Up grants in October:

ORGANIZATION	PROGRAM	GRANT
Aurora Waasakone Community of Learners	Better food for students	\$ 1,000
Bemidji ECFE Parent Advisory Council	Chairs for preschool	\$ 1,000
Bemidji Symphony Orchestra	Education concert travel stipends for schools	\$ 2,000
Bi-County Community Action Programs, Inc.	Sweet Repeats, Up North Boutique - Thrift Shop	\$ 2,628
Bi-County Community Action Programs, Inc.	Youth Build program	\$ 2,600
Blackduck Area Chamber of Commerce	2024 Blackduck Chamber Glow in the Snow	\$ 1,000
Blackduck Area Kids Ice Fishing Derby	Kids Ice Fishing Derby	\$ 750
Blackduck Area Senior Center	Newsletter expenses	\$ 800
Blackduck Area Toys for Kids	Toys for Blackduck-area kids	\$ 2,000
City of Kelliher	North Beltrami Heritage Center newsletter	\$ 900
Deeper Life Bible Camp	AED for camp facilities	\$ 1,700
Headwaters Science Center	Student Group & Transportation Fund for Rural & Diverse Schools	\$ 1,500
Lincoln Elementary School	Accelerated Reading for Grade 3	\$ 1,000
Luthern Social Service of Minnesota	Meals on Wheels program	\$ 2,000
Mississippi Headwaters Audubon Society	Forest Megaphone- Amplify Your Connections with Nature	\$ 2,000
Northland Summer Kickoff	Youth Beef Show	\$ 780
Northwest Minnesota Foundation	Equipment storage facility project	\$ 1,500
Northwoods Caregivers	Keeping Supervised Visitation and Safe Exchange safe	\$ 1,750
Oak Hills Fellowship	Aquaeye for Camp Oak Hills	\$ 1,860
Peacemaker Resources	STAR Collaborative	\$ 1,000
Red Lake Nation College	New nonfiction books for the Medweganoonind Library	\$ 2,500
Red Lake Rosies Rescue, Inc.	Red Lake Animal Wellness Center Clinics	\$ 2,000
Society of St. Vincent de Paul, St.Philip's Conference	Hope in Bemidji	\$ 3,500
Unbridled Ranch	Greenhouse for Unbridled Youth Ranch	\$ 1,500
United Way of Bemidji Area	Child abuse prevention in Beltrami County	\$ 2,000

DAILY CYCLING OF ELECTRIC STORAGE HEAT COULD BEGIN IN NOVEMBER

Members heating with electric thermal storage on the off-peak program, such as thermal storage room units, thermal storage furnaces or slab/in-floor heating, should turn on their heating system prior to Nov. 15 to allow a heat reservoir to build up before daily cycling of loads begins. The actual date daily cycling begins varies each season. Thermal storage heating is controlled each day from 7 a.m. to noon and 5 p.m. to 11 p.m.



Update your contact info to stay informed!

**Recently get rid of your landline or get a new phone number?
Using a new email address?**

Keeping your contact information updated with BEC is critical. In the event of an outage, you can easily report it by calling from the phone number associated with your account. A current mailing address and email address ensure you receive newsletters, emails and other important member communications. Call our member services team at 218-444-2540 or submit any changes to your contact info on our website at beltramielectric.com/update-my-information.



Classifieds

Classified ads rules

- Ads are due by the following dates:
 - **DECEMBER ISSUE:** Submit by November 1.
 - **JANUARY ISSUE:** Submit between November 2 and December 5.
- Ads may be submitted via our website at www.beltramelectric.com. (preferred)
- NO real estate, rental, personal or commercial ads will be accepted.
- All ads must be 50 words or less and typed or printed clearly.
- Editor reserves the right to edit or reject any ad.
- Members may only submit one for sale and one wanted or free ad per issue.
- Ads are published at no charge as space permits on a first-received, first-printed basis, **with no guarantee your ad will appear.**
- Ads are only allowed to be repeated for **three consecutive months** and must be resubmitted each month.
- Include name and Beltrami Electric account number on all submissions.

For Sale:

Hay for sale: small square bales. \$2.50/ea. 218-224-2523.

Plug-in baseboard heater. Electric fireplace/heater. 218-760-3298.

Solid maple table w/4 chairs, \$140/obo. Round oak coffee table, \$125/obo. Round oak table w/claw feet, \$100/obo. Lawn mower used one season, \$125. Other misc. 218-766-9587.

One roll synthetic roofing underlayment, titanium PSU 30 water barrier, 54 lbs, 36" x 72'. \$100. 218-835-7719.

Cranberry glass: complete 12-piece set plus gorgeous extra pieces – 89 pieces total. Need to see to appreciate. \$350/obo. King size 4-poster solid oak bed w/headboard and footboard. Also, solid base metal bed frame, wood slats, mattress, inner spring mattress. Plus, free cotton and flannel sheets. \$400/obo. Also, many children's books. 218-759-9339.

Lyon & Healy upright piano – you move. \$100. 218-335-8797.

NorthStar 37-ton splitter, 4 years old, used less than 20 hrs. Powered by Honda 277 CC engine, both horizontal and vertical

split capability. Asking \$2,000. Call 218-444-2280. Ask for Steve.

2009 Ford Crown Vic police interceptor 4.6-V8 runs good, good rubber, not an oil eater! 141K. May consider a trade for a Chevy Suburban of equal value. NO JUNK! Clean title – have in hand. Asking \$4,000/obo. 700-watt microwave, only used a few months was too small, asking \$25. 218-444-9422.

Spotting scope, \$40. Trekker 20-60x60, with soft case and tripod. Hardly used, in original box. Call or text 218-838-9720.

Simplicity gas lawn vacuum and mulcher, \$300/obo. 218-224-2883.

Rolling kitchen cart, quartz top, 35Hx26x19. \$95. 920-988-9526.

2004 Chevy 1/2-ton 4x4 automatic, may have transmission issues, 8 ft Western snowplow. Low mileage. \$5,000 or \$2,500 each. Spinning Jenny, approx half full of tensile wire, \$80. Approx 700' smooth hi-tensile wire, various lengths, \$20. Timber Tough model CS-BWM chain sharpener, \$70 w/instr. 218-586-2808. Call before 6 p.m.

Surge Guard voltage regulator, 120-volt, 30 amp. All-season fabric cover for 32-ft. class A motor home, 25' RV electric cord 220-volt, 30 amp, 36' Marincio RV electric cord 250-volt 50 amp, heavy-duty booster/jumper w/11' cable, RV water hose, 6' collapsible step ladder, Roadmaster Falcon tow bar. 218-547-1836.

Big Game portable shooting bench, \$60. Trius Traps, step-on clay pigeon launcher. \$60. Havahart live trap, suitable for squirrels, chipmunks, and woodchucks, \$20. 14' heavy-duty steel towing chain. \$20. Ph. 218-368-9320.

Pet Porter, 30x20x23 \$35; Large insulated porter jacket \$35, or \$60 for both. 2 office chairs, nice, \$35 each. Claw foot bathtub, needs refinishing, \$75. Illustrated World War II Encyclopedia 24 volume set, Exc. cond., \$50. Pyle wireless BT audio amplifier, new \$50. Dual indoor/outdoor speakers, new \$30. 218-368-1931.

1978 Ford F-150 runs and drives, lots of new parts, 4WD. \$3,800. Please call 218-368-4923.

2 tires P205/70 R15 \$50; New 7' spruce X-mas tree \$50; Microwave \$30; Misc scrap iron/steel 3' to 6' pieces (make offer) Kicker subwoofer, speakers and amp (make offer). Call for details 218-586-2962 (leave message if no answer).

4-drawer wooden chest of drawers, \$20. Two 2-drawer metal file cabinets, stack

them or put a tablecloth over them for 2 sofa side tables, \$15 each. Wall coat rack for Northwoods home or cabin – driftwood with deer antlers as hooks, \$70. Bernina serger, \$150. Snowmobile helmet, \$15. 218-586-2884.

Anti-freeze for euro car VW Audi Pentofrost E. One full gallon, not opened, and 1/2 gallon opened, both uncut with water. \$30. Mike at 218-444-4767.

Echo gas self-propelled lawn and garden vacuum/blower/chipper w/rare flower bed vacuum attachment, 8 hp \$525. Desk, bedside table, stackable 3-shelf unit w/ storage drawer, white with wood handles, excellent shape from Room & Board \$150. ShoreStation boat lift, 3600 capacity 10x13ft. On a local lake. Call for details 320-583-0471.

Stainless steel chimney cap \$40, fits large rectangle size, 4 plastic deck bench brackets to make bench \$20 for 4, new at Home Depot \$28 each. Ash vacuum \$40. Call or text 218-214-6168.

4 tubeless snow tires, General Alti Max Arctic Radial 194/65 R15 91Q, mounted on iron rims. Were on VW Jetta for only two winters. Asking \$20 each/obo, free hub caps. 218-751-8746.

Formal dining room table. Pecan wood table, 62"x42". Oval ends. With 6 chairs, including two chairs with armrests. Includes insert leafs. In very good condition \$150/obo. 218-766-6253.

Wanted:

Have a bobcat you're no longer using? Unbridled Ranch is in need of a used tractor or bobcat to move our round bales. Goes to a great cause and donation is tax deductible. Call 218-766-8625, www.unbridledranchmn.com.

Nu-Step exercise equipment or something similar that works for legs and arms. Stationary bike for exercising legs. 218-759-9339.

Free:

1990 Arctic Cat Panther 440 Deluxe snowmobile, for parts. 218-760 3210.

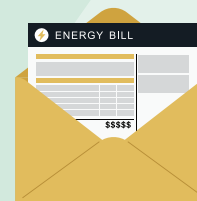
Five laying hens, 18 months old. 2 Copper Maran, 2 Americana, 1 Sapphire Splash. Excellent layers. 218-821-4400. Bemidji.

Used Holland brown paver bricks with tan brick for edging, Herringbone pattern. Removed from a walkway approximately 26 feet by 4 feet. In good condition. 218-243-2107.

NEED HELP PAYING YOUR ELECTRIC BILL?

Energy assistance may be available!

The Energy Assistance Program (EAP) helps pay for home heating costs and furnace repairs for income-qualified households. We urge you to contact them immediately to avoid disconnection if you feel you are eligible for aid. (Eligibility is based on energy costs, household size and the most recent month of income.)



BI-CAP IN BEMIDJI
6603 Bemidji Ave N
Bemidji, MN 56601
218-751-4631

BI-CAP IN WALKER
8245 Industrial Park Rd NW
Walker, MN 56484
218-547-3438

KOOTASCA
201 4th Street NW, Suite 130
Grand Rapids, MN 55744
218-999-0824

LEECH LAKE
115 6th St
Cass Lake, MN 56633
218-335-3783

MAHUBE-OTWA
120 North Central Ave
Park Rapids, MN 56470
218-847-1385

RED LAKE
15809 High School Dr
Red Lake, MN 56671
218-679-3350

We are looking for you!

Beltrami Electric Cooperative is looking for **Sara Harrison**, (Cass Lake, Minn.). Please call **218-444-2540** if you have any information.



BELTRAMI'S OFFICE WILL BE CLOSED FOR THE FOLLOWING HOLIDAYS:

Monday, Nov. 11, in honor of Veterans Day

Thursday, Nov. 28, as we celebrate Thanksgiving



SCAN ME

OR APPLY ONLINE

Visit energy-assistance.web.commerce.state.mn.us for EAP income guidelines and program information.

BUSINESS MEMBER SPOTLIGHT

WALKER HOME CENTER



Since 1984, Walker Home Center has been a cornerstone of the Walker community and surrounding areas. This family-owned business has prioritized quality and service, growing from its original downtown location to a spacious 16,000-square-foot facility just north of Walker in 1998. This expansion allows them to better serve their customers and meet their diverse needs.

Walker Home Center is not just your average hardware store; it offers a wide array of products designed to assist both do-it-yourself enthusiasts and professional contractors alike.

Whether you're looking to renovate your home, tackle a repair or enhance your outdoor space, you'll find everything you need under one roof offering appliances, grills, paint, hardware, generators and so much more.

What sets Walker Home Center apart is its unwavering dedication to customer service. The knowledgeable staff is always ready to provide expert advice, ensuring that customers have a productive shopping experience. They go above and beyond by offering services such as appliance delivery, installation, maintenance

and recycling, which streamline the process for customers.

If you're in the Walker area, a visit to Walker Home Center is a must. With its extensive product range and commitment to exceptional service, it's no wonder that this store has become the go-to destination for home improvement needs. Whether you're embarking on a major renovation or simply looking for a few supplies, you'll find everything you need to bring your projects to life.



8250 Industrial Park Rd NW, Walker | 218-547-1515 | www.walkerhomecenter.com

NORTHERN

L I G H T S

NOV 2024 | VOL. 71 | NO. 11

Northern Lights (USPS 016488)

Published monthly by Beltrami Electric Cooperative Inc., 4111 Technology Drive NW, Bemidji, Minnesota 56601-5128. Subscription rate is \$5. Periodicals postage paid at Bemidji, MN 56601.

POSTMASTER: Send address corrections to Beltrami Electric Cooperative Inc., P.O. Box 488, Bemidji, Minnesota 56619-0488.

OFFICERS AND DIRECTORS

Chair John Lund, *DISTRICT 7*

Vice Chair Sue Kringen, *DISTRICT 8*

Secretary Murl Nord, *DISTRICT 1*

Treasurer Sharon Lembke, *DISTRICT 9*

Directors: Charlie Perkins, *DISTRICT 2*; Kevin Geerdes, *DISTRICT 3*; Craig Gaasvig, *DISTRICT 4*; Robert Wallner, *DISTRICT 5*; Rick Coe, *DISTRICT 6*

President and CEO Jared Echternach

Editor Angela Lyseng

Office Hours: 8:00 a.m. – 4:30 p.m.
Monday – Friday

Telephone: 218-444-2540 or
1-800-955-6083

Website: www.beltramielectric.com

Email: info@beltramielectric.com

MN STATE ELECTRICAL INSPECTORS

Any time you or an electrician does wiring or other electrical work at your home or farm, Minnesota state law requires a state wiring inspector to conduct a proper inspection of the work. A rough-in inspection must be made before any wiring is covered. A final inspection is also required. Inspectors can be reached weekday mornings between 7 a.m. and 8:30 a.m. Find service territories for electrical inspectors here: <https://workplace.doli.state.mn.us/jurisdiction/>

BELTRAMI & HUBBARD COUNTIES:

Wade Koons | 218-580-8589
wade.koons@state.mn.us

CASS & HUBBARD COUNTIES:

Tony Kohrs | 218-616-1554
tony.kohrs@state.mn.us

GOPHER STATE ONE CALL

1-800-252-1166 or 811
www.gopherstateonecall.org



Anyone who plans to dig is required by law to notify the state of their intentions at least 48 hours in advance. All digging requires a 48-hour notification so that buried telephone lines, TV cable, pipelines, and utility electric lines can be located to ensure that none will be severed or damaged.

OUR MISSION STATEMENT

To provide excellent value to our members through the safe delivery of reliable electric service, excellent member service and innovative energy solutions at fair and reasonable prices.

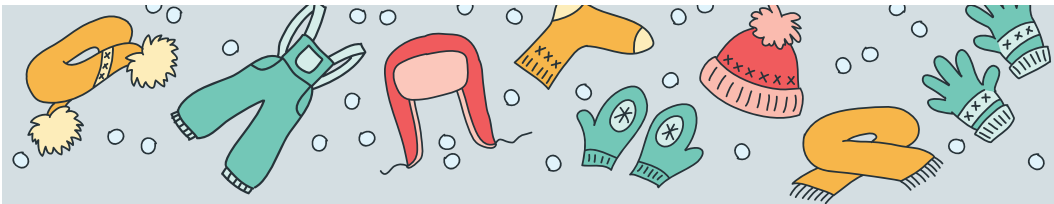
This institution is an equal opportunity provider and employer.



Beltrami Electric Cooperative Inc.

Your Touchstone Energy® Cooperative

Connecting Communities.
Powering Life.



Beltrami Electric's Mitten Tree: Help keep little hands and hearts warm this winter season

The chill of winter is fast approaching, and Beltrami Electric is once again accepting donations for its **Mitten Tree!** We are seeking donations of **NEW or HOMEMADE mittens, gloves, hats, scarves and socks** for children ages **0-5 years old**.



We are continually amazed by the generosity of our members, and this year, we're counting on that same spirit of giving to ensure every child receives the warmth and comfort they deserve. Whether you choose to purchase new items or craft them with your own hands, know that your kindness will have a lasting impact on a child's winter experience.

All items collected will be distributed to children through **Head Start, Early Child Family Education (ECFE) programs, and St. Mary's Mission School** in the Beltrami Electric service area. As the number of children in these programs continues to grow, we need your help to ensure every child receives a warm winter item. Every pair of mittens, every scarf and every cozy hat will go a long way in bringing warmth to a child's life this winter.

Donations will be accepted through **Friday, Dec. 6, 2024**. If you would like to contribute, you can drop off your contributions in the collection bin located in the lobby of Beltrami Electric's office at: 4111 Technology Drive NW, Bemidji, Minn.

This season, let's come together to share the warmth and ensure that every child is ready for the winter ahead!