

# NORTHERN

L I G H T S

March 2025

## THE POWER OF OFF-PEAK: A COOPERATIVE APPROACH TO HOME HEATING



When Diane Mostad and David Berg decided to build their home in rural northern Minnesota, they knew they wanted something efficient, comfortable and reliable. They began their journey into home heating, guided by personal research and the trusted expertise of Beltrami Electric Cooperative.



### A thoughtful approach to heating

David and Diane's original plan was to build a home with a walkout basement, but cost considerations led them to a slab-on-grade design. After consulting with experts — including David's nephew, a heating and refrigeration professional — they decided on a system that would offer both comfort and flexibility: in-floor electric heat combined with a gas furnace backup.

"Everyone we talked to recommended heating the slab because it holds warmth so well," David explained. "My nephew suggested adding a gas furnace for backup, and he even installed it for free — just had to cover materials."

This combination has proven to be an ideal solution. In winter, their in-floor heating keeps the home warm and cozy, while in the transitional seasons of spring and fall, the south-facing windows generate enough heat that switching to the gas furnace makes more sense. "It works well," David said. "It's nice to have options."

### Evolving with energy efficiency

Over time, the couple continued to explore ways to enhance their home's energy efficiency. Initially, they installed central air conditioning, but when their unit failed, they saw it as an opportunity to upgrade to an air-source heat pump.

"We had been reading about heat pumps for a while," Diane shared.

"When our air conditioner failed, we decided it was time to make the switch." Air-source heat pumps have gained popularity for their ability to provide both cooling and heating, often at a fraction of the cost of traditional heating methods.


- Article continued on page 3 -



Understanding our first rate change in seven years – page 4  
Ask the expert: Demand Q&A with Mike Birkeland – page 5



**Beltrami Electric  
Cooperative Inc.**

® Your Touchstone Energy® Cooperative 



# MN Legislative Update

by Jared Echternach, president and CEO



## BOARD MEETING HIGHLIGHTS

*Beltrami Electric Cooperative's board conducted its regular monthly meeting Friday, Jan. 31, 2025. A quorum of directors was in attendance.*

### **The following reports were given at the meeting:**

- President and CEO Echternach presented Kevin Geerdes with the Credentialed Cooperative Director Certificate.
- President and CEO Echternach and the board discussed recent safety successes and observations.
- President and CEO Echternach made his monthly report, including financials, a recap of 2024, employee updates, interconnections, franchise fees, legislative priorities and America's Electric Cooperatives PAC.
- President and CEO Echternach presented December's preliminary financial report.
- Bob Gregg reviewed the annual net metering and cogeneration report and associated filings.
- Directors and President and CEO Echternach discussed upcoming meetings and events.

### **The following actions were taken at the meeting:**

- Approved the consent agenda.
- Approved the annual net metering and cogeneration report, associated filings and rates.
- Appointed Marne Waldo to the Beltrami Electric Cooperative Trust Board (Operation Round Up®).
- Appointed all nine directors as the Minnkota Power Cooperative and Square Butte Electric Cooperative annual meeting voting delegates.
- Approved director and President and CEO expenses.
- Approved a tentative agreement with a bargaining unit.

*The next board meeting will be held on Wednesday, March 26, 2025.*

As you may be well aware, electric cooperatives were born in politics, and it's extremely important we engage our legislators to advocate on your behalf on legislative issues affecting your electric cooperative. The 2025 Minnesota legislative session began Jan. 14. Here are the energy-related issues impacting your cooperative at the state level:

### **Property tax**

Our top priority and a carryover from last year will be the property tax exemption legislation. Since 1939, the Minnesota Department of Revenue (DOR) has excluded cooperative-owned rural meters and streetlights from a rural electrification property tax and instead, Minnesota electric cooperatives pay a per member tax. This legislation would protect that exemption.

The Senate Taxes Committee heard SF 132, and the Minnesota DOR testified in support of the bill. A companion bill will be introduced in the House. The governor has also included this policy in his proposed tax bill. We support the bill.

### **Net metering reform**

We will continue to push for net metering reform. Under existing net metering laws, we are seeing more and more net-metered systems sized at 39.9-kW installed on small services. This allows the net metering participants to distribute and sell more electricity to the cooperative for which we are required by law to pay the average

retail rate. In short, we are required to pay a premium for this electricity when we could purchase it for less through our wholesale power supplier. Electric cooperatives have long sought to correct this deficiency by implementing a size-to-load provision, which would still allow members to offset their own use, which was the original intent of net metering, while protecting other members who may not want or cannot afford to install their own generation. We support net metering reform.

### **Nuclear**

The Minnesota Rural Electric Association (MREA) is part of a coalition attempting to lift the nuclear moratorium in Minnesota. The House Energy Committee heard HF 9, a bill that would lift the nuclear moratorium. MREA testified in favor of lifting the nuclear moratorium and in general support for the bill which included carbon capture and large hydroelectricity counting toward the 100% carbon free by 2040 law. The Senate Energy Committee will continue its focus on nuclear energy with two bills. SF 350 proposes to lift the nuclear moratorium and SF 468 proposes to lift the nuclear moratorium for small modular reactors under 300 megawatts. We support lifting Minnesota's nuclear moratorium.

We will continue to advocate on your behalf to provide our members with safe, reliable, and affordable electricity now and into the future.

## THE POWER OF OFF-PEAK (continued)

With their home already outfitted with ductwork, the transition was seamless. "The heat pump's efficiency is going to help lower our bills while keeping us comfortable year-round," David noted.

### The value of cooperative service

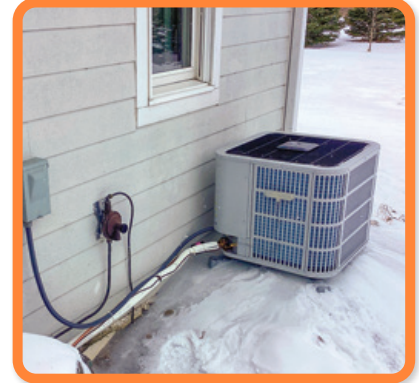
Through every step of their home heating journey, Beltrami Electric Cooperative has been a trusted partner. Diane and David have benefited from the cooperative's reliability, knowledgeable staff and commitment to member service. "The continuity and reliability are what we appreciate most," Diane said. "Beltrami Electric has been progressive in keeping up with technology, underground lines and environmentally friendly power solutions."

### Planning ahead for a smarter home

For those considering building or upgrading their heating systems, Diane offers practical advice: "Think ahead. Plan for what's best for your home in the long run."

Beltrami Electric provides multiple programs to support members in making smart energy decisions, including off-peak heating programs. These programs allow homeowners to use electricity during low-demand times at a reduced rate, leading to significant cost savings over time.

As energy technology continues to evolve, members like Diane and David are proof that with a little planning, the right support and a commitment to efficiency, rural homeowners can enjoy both comfort and cost savings — all while benefiting from the power of off-peak heating and cooperative membership.



## Kevin Geerdes completes Credentialed Cooperative Director (CCD) Program

Beltrami Electric Cooperative board member Kevin Geerdes recently received a certificate for completing the Credentialed Cooperative Director (CCD) program. The CCD program consists of courses that focus on basic governance knowledge and the essential skills required of cooperative directors. The CCD prepares directors to fulfill their fiduciary duty as elected officials serving on behalf of their membership. Congratulations to Kevin on completing the CCD program.



## THONSON PROMOTED TO FOREMAN



**Chris Thronson** accepted the line foreman position in January. Chris will celebrate his 20-year work anniversary in April 2025. Congratulations, Chris!

## Operation Round Up® application deadline!

Do you know of a nonprofit organization in our service territory that would benefit from a grant from Operation Round Up? Community organizations and nonprofit groups may apply for an Operation Round Up grant by completing and returning an application form.

For more details and a fillable application, please visit our website at [beltramielectric.com/operation-roundup](http://beltramielectric.com/operation-roundup)



The deadline for grant applications is **FRIDAY, MARCH 21, 2025.**





# Understanding our first rate change in seven years:

## Keeping up with reliability, costs and financial responsibility

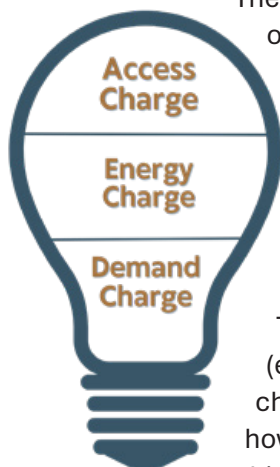
As a not-for-profit, member-owned cooperative built by those we serve, our focus is on service, not profit. We only change rates when necessary to keep our service reliable, pay our loans and stay financially stable.

In April, for the first time since 2018, Beltrami Electric Cooperative will be adjusting rates to:

- Maintain a reliable electric distribution system,
- Adapt to grid changes, and
- Keep pace with rising costs,
- Pay our loans to meet financial obligations.

Our wholesale power supplier, Minnkota Power Cooperative, will increase rates by 8% in April. Wholesale power accounts for roughly 70% of our total costs and has a significant impact on our operations. This is Minnkota's first rate increase in eight years.

The average rate change will be approximately 12.7% and will vary by member, depending on rate classification and how you use electricity. Spread over seven years, this averages 1.8% per year, which is below the rate of inflation over the same period.



### Three-part rate

BEC will be moving to a three-part rate, which will be made up of three components:

The monthly access charge, a kWh (energy) charge, and a demand charge to better align our rates with how we pay for wholesale power, which includes a demand component.

### Member resources & tools

*Members can find detailed information about the upcoming rate change, including a demand calculator, residential rate calculator, frequently asked questions and energy-saving tips on our website.*

[www.beltramielcric.com/rates](http://www.beltramielcric.com/rates)

**Look for a full-page letter/bill insert with April billing statements providing additional information about the upcoming rate change.**

# ASK THE EXPERT!



## DEMAND Q&A

Mike Birkeland – VP of Electrification and Member Experience

### Q. Why add a demand charge?

A. A cost-of-service study showed we need to better match the cost of peak usage with peak power costs on the grid. The buildout of solar and wind energy can cause shortages in power markets when the wind isn't blowing and the sun isn't shining. When a power supply and demand imbalance occurs, BEC has to pay more for power. The addition of a demand charge better reflects the way your cooperative pays for wholesale power. A demand charge accounts for these higher grid costs during times of peak demand. This change will better align member rates with the cost of wholesale power.

### Q. How is my demand calculated?

A. "Demand" measures the highest amount of power used at one time each month. Running more appliances and devices at once increases your demand. The average demand is measured in kW (kilowatts) on the general service (main) meter. The 60-minute interval with the highest demand is used to calculate the monthly peak demand on your bill. Typical BEC households average a demand of 4.6 kW per month.

### Q. What about Off-Peak?

A. Off-peak meters and programs are excluded from a demand charge since these loads are shut off during peak demand periods. Off-peak programs and loads do not contribute to supply and demand imbalances on the grid. Off-peak loads help balance the grid (and BEC's costs) when controlled during peak demand periods.

### Q. How can I track my demand?

A. You can track your demand several ways.

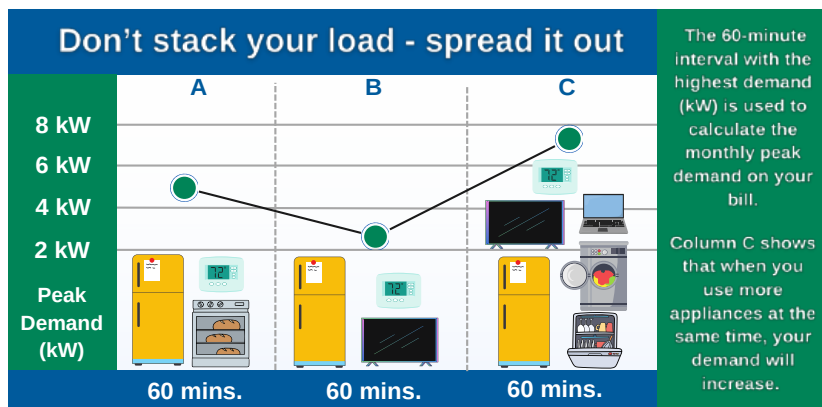
- 1. On your bill:** Your monthly demand is posted in the Account Detail section of the bill.
- 2. SmartHub:** View demand in real-time through the SmartHub mobile app or through SmartHub on our website. In the menu, select Usage, then Usage Explorer, change the Usage Type to [kWh and Demand (kW)] and a line will appear to show your demand.
- 3. MyMeter:** Select Demand (kW) in the chart view to see your demand. You can also set notifications for your demand – if it goes over a certain kW in an hour, day, week or billing period.

### Q. How can I lower demand?

A. Don't use too many high-power appliances at once. Spread out electric use to minimize your demand charge. For example, avoid running your air conditioner, electric oven and clothes dryer at the same time (see graphic to the right for examples of how running multiple items at one time can affect demand).



**Mike Birkeland**  
VP of Electrification and  
Member Experience





# Classifieds

## Classified ads rules

- Ads are due by the following dates:
  - **APRIL ISSUE:** Submit by March 3.
  - **MAY ISSUE:** Submit between March 4 and April 4.
- Ads may be submitted via our website at [www.beltramelectric.com](http://www.beltramelectric.com). (preferred)
- NO real estate, rental, personal or commercial ads will be accepted.
- All ads must be 50 words or less and typed or printed clearly.
- Editor reserves the right to edit or reject any ad.
- Members may only submit one for sale and one wanted or free ad per issue.
- Ads are published at no charge as space permits on a first-received, first-printed basis, **with no guarantee your ad will appear.**
- Ads are only allowed to be repeated for **three consecutive months** and must be resubmitted each month.
- Include name and Beltrami Electric account number on all submissions.

## For Sale:

20-ft covered slip with electric. In the harbor on Kabekona Bay of Leech Lake. \$1,200 for season. Call Gary at 970-901-2605.

4x5 round hay bales and sq straw bales. Please call 218-407-3514 anytime. Cash-n-carry/U-Haul away.

Older Simplicity 8 hp. snowblower. Needs carburetor cleaning. Worked great for 30 years. \$50. 218-766-2209.

Singer Featherweight sewing machine. Authenticated 1940s model with original parts. \$250. Includes case and attachments. 218-854-7520.

2006 Grizzly 660 with plow, good condition with new tires, hand and thumb warmers and diff. lock. \$4,000/obo. Call 218-766-1108, please leave message if no answer.

Shrunk inflatable toddler bed. Like new, only used a couple of times. \$45. 218-556-8507.

Double snowmobile trailer \$1,200. Please call 218-556-8155.

1928 Ford Model A Coup with rumble seat \$10,000. Air compressor, Sanborn 60 gal \$150. Queen mattress for camper 8" x 60" x 80," never used \$150. 1948 Firestone record player console w/radio \$100. Please call 218-444-9794.

Time for tree tapping! Taps, hoses, collection containers, cooking kettles, Coleman white gas stoves for outdoor cooking, bottles for syrup. Twelve ft. two pc. surfcasting rod. Penn 200 reel, protective fabric sleeve. \$300 value now \$100. Chest waders, men's 8 and 10. \$35 each. 218-586-2884.

Two vintage sewing machines: a "Domestic" brand rotary electric sewing machine in wood cabinet, and a "Montgomery Ward's" brand treadle sewing machine in wood cabinet - \$700 each. Used. Good condition.

Rabbits, hay for sale, small square bales \$3/each, large round bales \$45/each very nice grass hay horse qualify. Goose neck livestock trailer, roughly 20 ft long, new tires, brakes, paint and floor \$5,000. 218-766-2853.

Carhartt duffel bag \$50. Laptop case \$40. Vintage Ideal Radiant coal heater \$50. Horse

statues and plates \$10 each. 218-759-0186.

2001 Dodge Caravan: runs, moves, 157K, 3.3 V-6 motor 4-spd overdrive tranny (RUSTY) comes with tune-up items, extra alts and starters, new block heater, clear title, asking \$2,000 FIRM. Also have a 09 Ford Crown Vic Interceptor 141K asking \$4,000/obo but will listen to offers. 218-444-9422.

For sale or trade: Western Unimount Truckmount for a 2000 Ford Ranger. Call or text: 218-368-2369.

1977 Johnson 16-ft M-scow sailboat/trailer. Good condition. Multiple sails, 24-ft mast, 2 extra rudders, original sailing manual. Fast sailing. \$900. 2000 release Ninja Turtle toy action figures, van and motorcycle, \$100. Call 218-586-2856.

## Wanted:

Do you have an old chair you want recaned? Call Nate at 218-407-0168.

Reliable housekeeper 1-2 hours weekly in Blackduck. Retired teacher, will care for your pet while you're gone. Your home or mine. Will also house-sit. Call 218-766-6510.

10KW 240-volt electric furnace. 2KW 240-volt inwall electric wall heaters. Milwaukee M-12 cordless tools and lithium batteries. 16-volt cordless Rockwell drill and tools with lithium batteries. Truck snowplow mount-looking for a Western unimount for a 2000 S-10 Chevy. Call or text: 218-368-2369.

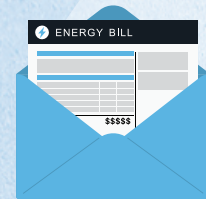
## Free:

Direct TV receiver. 586 2884.

# NEED HELP PAYING YOUR ELECTRIC BILL?

## Energy assistance may be available!

The Energy Assistance Program (EAP) helps pay for home heating costs and furnace repairs for income-qualified households. We urge you to contact them immediately to avoid disconnection if you feel you are eligible for aid. (Eligibility is based on energy costs, household size and the most recent month of income.)



**BI-CAP IN BEMIDJI**  
6603 Bemidji Ave N  
Bemidji, MN 56601  
218-751-4631

**BI-CAP IN WALKER**  
8245 Industrial Park Rd NW  
Walker, MN 56484  
218-547-3438

**KOOTASCA**  
201 4th Street NW, Suite 130  
Grand Rapids, MN 55744  
218-999-0824

**LEECH LAKE**  
115 6th St  
Cass Lake, MN 56633  
218-335-3783

**MAHUBE-OTWA**  
120 North Central Ave  
Park Rapids, MN 56470  
218-847-1385

**RED LAKE**  
15809 High School Dr  
Red Lake, MN 56671  
218-679-3350



## OR APPLY ONLINE

Visit [energy-assistance.web.commerce.state.mn.us](http://energy-assistance.web.commerce.state.mn.us) for EAP income guidelines and program information.



**BELTRAMI ELECTRIC**  
Indoor Garage Sale

**Saturday, May 3, 2025**



Booth reservations for vendors will be open on **Wednesday, April 2, 2025**, and will be accepted until all booths have been filled. If interested, stop by our office at 4111 Technology Dr. NW in Bemidji and sign up, or contact Cammie at **218-444-3675** or [cvogel@beltramelectric.com](mailto:cvogel@beltramelectric.com).

# MARCH READER'S CONTEST

For your chance to be entered in a drawing to **win a \$10 credit** on your bill, correctly answer the questions and include with your payment or mail to: BEC, P.O. Box 488, Bemidji, MN 56619. Or email answers to [info@beltramelectric.com](mailto:info@beltramelectric.com) with the subject line "Reader's Contest." Be sure to include your name and BEC account number. **Entries must be received by March 25.**

1. BEC supports \_\_\_\_\_ reform.
2. Typical BEC households average a demand of \_\_\_\_\_ kW per month.
3. Members can find a rate comparison \_\_\_\_\_ and a demand \_\_\_\_\_ on our website.

Member Name:	BEC Account Number:	Phone/Email address:
--------------	---------------------	----------------------

Congratulations to January contest winner: Deborah Best



# CO-OP CONNECTIONS® PROGRAM

Providing value to  
Beltrami Electric  
members

Download the mobile  
app today!



## LOCAL BUSINESS OFFERS

### A Stitch in Time

\$5 off any sewing or vacuum service  
200 Paul Bunyan Dr S, Suite #2, Bemidji

### Beltrami County Historical Society

\$1.00 off adult admission, up to 4 adults  
(single visit only, not valid with other offers)  
130 Minnesota Ave SW, Bemidji

### Bemidji Communications

20% off labor  
211 Minnesota Ave NW, Bemidji

### Bemidji Sports Centre

5% off apparel (hats, jackets, soft lines)  
1826 Anne St NW, Bemidji

### Bemidji Woolen Mills

10% off total purchase  
301 Irvine Ave NW, Bemidji

### Big Apple Bagels-Bemidji

10% off regularly priced menu items  
1710 Paul Bunyan Dr NW, Bemidji

### Buena Vista Ski Area (Seasonal)

10% off regular-price ski lift ticket  
(excludes Friday nights)  
19600 Irvine Ave NW, Bemidji

### Compass Rose

10% off regular-price items  
(Some exclusions apply)  
108 3rd St NW, Bemidji

### Country Kitchen of Bemidji

10% off ticket  
728 Paul Bunyan Dr NW, Bemidji

### Darrell's Auto Glass

10% off complete windshield replacement  
2035 Adams Ave NW, Bemidji

### Garden Grill & Pub

Free side order of fries with order  
111 Central Ave SE, Bemidji

### Headwaters Realty Services

No real estate transaction fees (\$350 value)  
Free consultation & home staging tips  
802 Paul Bunyan Dr S #15, Bemidji

### Headwaters Science Center

Receive 1 free child admission with the  
purchase of 1 adult admission.  
413 Beltrami Ave NW, Bemidji

### Hill's Country Greenhouse (Seasonal)

10% off regular price purchase  
(Excludes special orders and gift certs)  
49274 US 71, Bemidji

### Image Photography and Framing

10% off in-studio portrait sessions for  
family or high school seniors, Free  
duplicate DVD of any videotape transfer  
(limit 10)  
1305 Bemidji Ave N, Bemidji

### Jackson Hewitt Tax Service

33% off tax preparation new customers  
(Use Code: XK6T9)  
1008 Paul Bunyan Dr NW #3, Bemidji

### Keith's Pizza, Inc.

\$2.00 off any large or extra large pizza  
(Not valid with other discounts, offers or  
unbaked pizzas)  
South: 110 Paul Bunyan Dr S, Bemidji  
North: 1425 Paul Bunyan Dr NW, Bemidji

### Ken K. Thompson Jewelry

20% discount on all regular-price jewelry  
(not valid on repairs or prior layaways)  
1080 Paul Bunyan Dr NW, Bemidji

### Lakes Area Powersports

Additional 10% off in-stock parts,  
accessories & clothing  
8322 State 371 NW, Walker

### LePier Shoreline & Outdoors

10% off marine product purchase &  
trailers  
307 Convenience Lane SW, Bemidji

### McKenzie's

10% off regular-price merchandise  
(Excludes consignment vendor items.  
See store for details)  
802 Paul Bunyan Dr S, Bemidji

### Midnight Sun Pools n' Spas

10% off chemicals  
3411 Hannah Ave NW, Bemidji

### MJB Home Center

Free hoses or cords with purchase of  
new washer, dryer or range  
418 Beltrami Ave NW, Bemidji

### Mommykins Creations

5% off total purchase  
23654 398th St, Laporte

### Northern Event Rentals

10% discount on table or chair rental  
3859 Cornflower Ct SE, Bemidji

### Orton's Station Stores:

Bemidji Orton's, Cass Lake Orton's,  
Walker Orton's, Walker Y-Mart  
5c off per gallon of gasoline

### Papa Murphy's

\$3 off any pizza, any size  
(not valid with other offers)  
512 Paul Bunyan Dr NW, Bemidji

### Pete's Place South

5c off per gallon of gasoline  
179 Convenience Ln SW, Bemidji

### Red Lake Fish Houses (Seasonal)

10% off Tuesdays and Wednesdays  
35241 Hwy 72 NE, Northome

### Royal Shooks Motel

10% discount Tuesdays & Wednesdays  
35241 Hwy 72 NE, Northome

### Snap Fitness-Bemidji

10% off regular-price membership  
3835 Supreme Ct NW, Ste 1, Bemidji

### SND Appliances

2% off purchase  
3481 Laurel Dr NW, Bemidji

### Stittsworth Meats

5% off total order  
722 Paul Bunyan Dr NW, Bemidji

### Timberline Sports 'n' Convenience

Save 10% on select gun accessories  
with purchase of a firearm  
209 Summit Ave W, Blackduck



Visit [connections.coop](http://connections.coop) to view local and national deals!



# NORTHERN

L I G H T S

MARCH 2025 | VOL. 72 | NO. 3

### Northern Lights (USPS 016488)

Published monthly by Beltrami Electric Cooperative Inc., 4111 Technology Drive NW, Bemidji, Minnesota 56601-5128. Subscription rate is \$5. Periodicals postage paid at Bemidji, MN 56601.

**POSTMASTER:** Send address corrections to Beltrami Electric Cooperative Inc., P.O. Box 488, Bemidji, Minnesota 56619-0488.

### OFFICERS AND DIRECTORS

**Chair** ..... John Lund, *DISTRICT 7*

**Vice Chair** ..... Sue Kringen, *DISTRICT 8*

**Secretary** ..... Murl Nord, *DISTRICT 1*

**Treasurer** ..... Sharon Lembke, *DISTRICT 9*

**Directors:** Charlie Perkins, *DISTRICT 2*; Kevin Geerdes, *DISTRICT 3*; Craig Gaasvig, *DISTRICT 4*; Robert Wallner, *DISTRICT 5*; Rick Coe, *DISTRICT 6*

**President and CEO** ..... Jared Echternach

**Editor** ..... Angela Lyseng

**Office Hours:** 8:00 a.m. – 4:30 p.m.  
Monday – Friday

**Telephone:** 218-444-2540 or  
1-800-955-6083

**Website:** [www.beltramielectric.com](http://www.beltramielectric.com)

**Email:** [info@beltramielectric.com](mailto:info@beltramielectric.com)

### MN STATE ELECTRICAL INSPECTORS

Any time you or an electrician does wiring or other electrical work at your home or farm, Minnesota state law requires a state wiring inspector to conduct a proper inspection of the work. A rough-in inspection must be made before any wiring is covered. A final inspection is also required. Inspectors can be reached weekday mornings between 7 a.m. and 8:30 a.m. Find service territories for electrical inspectors here: <https://workplace.doli.state.mn.us/jurisdiction/>

### BELTRAMI & HUBBARD COUNTIES:

Wade Koons | 218-580-8589  
[wade.koons@state.mn.us](mailto:wade.koons@state.mn.us)

### CASS & HUBBARD COUNTIES:

Tony Kohrs | 218-616-1554  
[tony.kohrs@state.mn.us](mailto:tony.kohrs@state.mn.us)

### GOPHER STATE ONE CALL

1-800-252-1166 or 811  
[www.gopherstateonecall.org](http://www.gopherstateonecall.org)



Anyone who plans to dig is required by law to notify the state of their intentions at least 48 hours in advance. All digging requires a 48-hour notification so that buried telephone lines, TV cable, pipelines, and utility electric lines can be located to ensure that none will be severed or damaged.

### OUR MISSION STATEMENT

*To provide excellent value to our members through the safe delivery of reliable electric service, excellent member service and innovative energy solutions at fair and reasonable prices.*

*This institution is an equal opportunity provider and employer.*



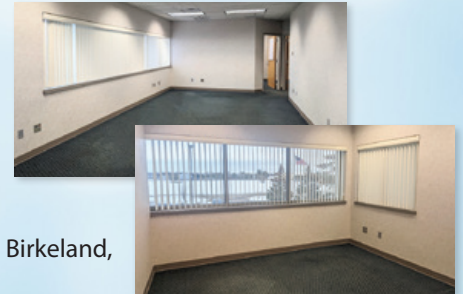
**Beltrami Electric Cooperative Inc.**

® Your Touchstone Energy® Cooperative

*Connecting Communities.  
Powering Life.*

## PROFESSIONAL OFFICE SPACE AVAILABLE FOR LEASE

**Suite# 203:** Features 923-sq. ft office suite, including a reception area plus three separate office suites. Will modify to suit. Second-floor location, elevator, and adjacent conference/meeting room. Located in a safe, clean, quiet, low-traffic area of a well-maintained professional building.



For further details on this space, contact Mike Birkeland, Beltrami Electric Cooperative, **218-444-2540**.

**Beltrami Electric Cooperative's headquarters**

## NOTICE TO COGENERATORS

In accordance with Minnesota Statutes, Beltrami Electric Cooperative has adopted rules relating to cogeneration and small power production. Beltrami Electric Cooperative is obligated to interconnect with and purchase electricity from cogenerators and small power producers who satisfy



the conditions as a qualifying facility. Beltrami Electric Cooperative is obligated to provide information free of charge to all interested members upon request regarding rate and interconnection requirements. All interconnections require an application and approval to become a qualifying facility.

Any dispute over interconnections, sales and purchases are subject to resolution by the Beltrami Electric Cooperative Board. Interested members should contact Beltrami Electric Cooperative, 4111 Technology Dr. NW, P.O. Box 488, Bemidji, MN 56601, or call **218-444-2540**.