

NORTHERN

L I G H T S

June 2026

2026 DISTRICT MEETINGS:

YOUR VOICE. YOUR CO-OP.

This June, we invite members in Districts 2, 4 and 6 to take part in the 2026 District Meetings. These meetings are more than a routine obligation. They are where local decisions begin, leadership takes shape and members have a direct say in the future of their co-op.

WHY IT MATTERS

Electric cooperatives are built on a simple idea: The people who use the service help guide it. District meetings are one of the most important ways that happens. At each meeting, members will:

- Participate in the nomination of candidates for the board
- Help determine which candidates move forward to the general election ballot in August
- Engage with local leadership to stay informed and connect with your co-op

THINKING ABOUT RUNNING?

Members interested in running for a director position must submit a completed candidate packet at least five business days before their district meeting. This allows the cooperative to verify eligibility. To request a candidate packet or learn more, contact our office at **218-444-2540**.

BE PART OF WHAT POWERS YOUR COMMUNITY

District meetings are your opportunity to connect, participate and make an impact close to home. Whether you come to listen, ask questions or take a more active role, your presence helps strengthen the cooperative. Check the sidebar on this page for your district and plan to attend.



Beltrami Electric Cooperative Inc.

® Your Touchstone Energy® Cooperative 

DISTRICT MEETINGS

DISTRICT 2

Incumbent: Charlie Perkins

When: Thursday, June 25, 6 p.m.

Where: Red Lake Nation College, Student Union, 15480 Migizi Dr, Red Lake

District 2 includes: BEC service areas within the Red Lake Reservation

DISTRICT 4

Incumbent: Craig Gaasvig

When: Tuesday, June 23, 6 p.m.

Where: Beltrami Electric Community Room, 4111 Technology Dr NW, Bemidji

District 4 includes the following townships:

Beltrami County: Summit, Hines, Hagali, Port Hope, Taylor and Birch

Itasca County: Third River

DISTRICT 6

Incumbent: Rick Coe

When: Wednesday, June 24, 6 p.m.

Where: Beltrami Electric Community Room, 4111 Technology Dr NW, Bemidji

District 6 includes the following townships:

Beltrami County: Bemidji (Sections 1-24), Northern, Turtle River and Frohn (Sections 1-18)



Summertime in the Northwoods

by Jared Echternach, president and CEO

The summer season is upon us. It sure seemed like a long winter this year. Summertime in the Northwoods brings many of our favorite outdoor activities. Whether you'll be out on the lake, enjoying a cookout with family and friends, or adventuring on the many trails in our area, there is plenty to enjoy.

Summer is also the season for dangerous storms. As we experienced last year, a derecho, straight-line winds and even tornadoes can pop up in our area. These weather events can



cause destruction to our electrical system, and I want you to know that Beltrami Electric Cooperative crews are ready to respond should power outages occur in our area. We now have more than 76% of our distribution lines underground and our exposure to damage from severe winds is greatly reduced. Our vegetation management program also decreases the chance for service

interruptions and provides the proper safety clearances needed for crews working in the right of way to perform maintenance or restore power. Keeping your power on is our number two priority behind safety. Despite our best efforts, power outages do occur for a variety of reasons, including strong seasonal storms, trees, squirrels, downed power lines, equipment failure and accidents.

When major storms knock out power, our line crews take all necessary precautions before they get to work on any downed lines. I encourage you to also practice safety and preparedness to protect your family during major storms and outages.

ANNUAL AND DISTRICT MEETINGS

This year's annual meeting will be held Wednesday, Aug. 12, at the Beltrami County Fairgrounds in conjunction with the Beltrami County Fair.

As part of the election process, we will hold three district meetings in June, at which candidates may be nominated to serve on the board. Seats in District 2, currently served by Charlie Perkins, District 4, currently served by Craig Gaasvig, and District 6, currently served by Rick Coe, are up for election this year. All incumbents have indicated their intent to run for reelection.

Please see the detailed information on the cover for meeting locations, dates and times. Additional information can be found on our website at beltramielectric.com/board-directors.

CONGRATULATIONS TO LESLIE

Member Services Representative Leslie Huot retires this month, and I'd like to personally thank Leslie for her 26 years of service to our cooperative members. Leslie always greeted our members with a friendly voice and welcoming smile. Whether it was helping them with a new service or navigating the energy assistance programs, she always had our members' best interests in mind. Thank you, Leslie, for taking care of our members for nearly three decades. I wish you a long and healthy retirement.

APRIL 2026 BELTRAMI ELECTRIC BOARD MEETING HIGHLIGHTS

Beltrami Electric's board of directors conducted its regular monthly meeting on **Monday, April 20, 2026**. A quorum of directors was in attendance.

- President and CEO Echternach and the board discussed recent safety successes and observations.
- Correspondence was reviewed. A member's concern was shared with the board.
- President and CEO Echternach made his monthly report, including a board retreat, Red Lake Solar project,
- Operation Round Up, legislative issues affecting our cooperative, legal update and employee updates.
- The City of Bemidji Electric Franchise Ordinance was reviewed and discussed.
- President and CEO Echternach reviewed the updates to the Cooperative Service Standards.
- Directors and President and CEO Echternach shared highlights of meetings attended on behalf of the cooperative and discussed upcoming meetings, events and education conferences.
- Accepted the City of Bemidji Electric Franchise Ordinance.
- Approved a Cooperative Family Fund donation.
- Approved director and President and CEO expenses.

The following actions were taken:

- Approved the consent agenda.

The next board meeting will be held Monday, June 29, 2026.

EMPLOYEE NEWS AROUND THE CO-OP

HUOT RETIRES AFTER 26 YEARS



After nearly 26 years of dedicated service to Beltrami Electric Cooperative, Member Service Representative Leslie Huot will retire on June 26, 2026. Throughout her career, Leslie has been a familiar and trusted presence for members, providing assistance, answering questions and helping ensure a positive experience with the cooperative. Her commitment to service and her connection with the community have made a lasting impact on both members and co-workers alike. Leslie and her husband, Mark, make their home west of Bemidji. As she begins this next chapter, she is looking forward to spending more time doing the things she enjoys most, including camping, traveling, gardening and cheering on her grandchildren at their activities. Please join us in thanking Leslie for her many years of service and in wishing her all the best in a long, happy and well-earned retirement.

ROGERS PROMOTED TO LINE SUPERINTENDENT



We are pleased to announce the promotion of Ryan Rogers to Line Superintendent. Ryan brings more than two decades of experience to his new role. He began his career with the co-op in July 2000 as an apprentice lineworker and later achieved journeyman status. In October 2021, he was promoted to line foreman, where he demonstrated strong leadership and a deep commitment to safety and service. A graduate of Bemidji High School, Ryan continued his education at Wadena Technical College, where he completed the electrical lineworker program. In his new position, Ryan will oversee line operations and continue supporting the cooperative's mission of providing safe and reliable service to members. Please join us in congratulating Ryan on his promotion.

WELCOME HALEY BURR



We are pleased to welcome Haley Burr to our member services team as a member service representative. In this role, Haley will assist members with their accounts, providing support and guidance to help meet their service needs. Haley brings valuable experience in member service and financial operations, having previously worked at TruStar Federal Credit Union where she assisted banking members with a wide range of account services. Her background in member-focused service makes her a strong addition to the cooperative. Haley resides in Bemidji with her daughter, Scarlett, and looks forward to serving the members of Beltrami Electric Cooperative.



ONLINE AUCTION *SELLING NO RESERVE*
June 23



FK0140 2016 Dodge Ram
5500 4x4 bucket truck



FK0141 2005 International 7400
DT466 4x4 bucket truck

purplewave.com
BUILT ON TRUST. POWERED BY EXPERIENCE.

All items sell where they sit. | 10% buyers premium applies. | 1.866.608.9283

“Ag Day Breakfast”



Beltrami County Farm Bureau
Beltrami County Fairgrounds
Sunday, June 28
9 a.m. - Noon

*...serving pancakes, sausage, ham,
juice, coffee or milk, and ice cream
with a free-will donation...*

Family Fun, Silent Auction
Farm Animals, Children's Activities
Live Music, Wagon Rides
Pig Show starts at 11 a.m.

PLUGGING IN: HOW ONE COUPLE MADE THE SWITCH TO EVS



Carol and Dan Pavik stand between their two Chevrolet EVs.

When Dan and Carol Pavik decided to purchase not one, but two electric vehicles last fall, they did so with some hesitation. Like many, they had read concerns about EV performance, especially in colder climates. Still, strong incentives made the decision worth exploring.



The Paviks installed a GM-provided Level 2 EV charger in their garage on BEC's off-peak program.

In September 2025, the Paviks brought home a Chevrolet Blazer EV and a Silverado EV, with estimated ranges of 284 and 400 miles. To prepare, they contacted Beltrami Electric Cooperative about installing a home charging station on the cooperative's off-peak program.

That decision quickly paid off. With rebates of up to \$1,250, the cost of installation, including additional equipment and a meter, was fully offset. Charging at

home on off-peak costs about \$3.50 for the Blazer and \$7 for the Silverado, per charge. "The cost to charge is what really surprised us," Dan said. "It's been far more affordable than we expected."

Winter performance, often a concern for EVs, proved better than anticipated. While efficiency dropped slightly, overall costs remained low. On average, the Paviks spent about \$46 per month to charge both vehicles, even during the coldest months.

The driving experience has also stood out. All-wheel drive handled snow and ice with ease, while features like regenerative braking and one-pedal driving added convenience. Even towing a boat exceeded expectations compared to previous gas-powered trucks.

"They handle the snow and ice incredibly well, and honestly, they're just fun to drive," Dan said.

Before installing their home charger, the Paviks found plenty of fast-charging options in Bemidji and along travel routes. Many dealerships also offer public charging, including Ford, Chevrolet and Toyota, and mobile apps make it easy to locate stations for longer trips.

Looking back, their expectations have been exceeded. "We're never going back to a gas vehicle," Dan said. For the Paviks, the switch to electric has proven to be both practical and rewarding.

EXTREME WEATHER IS UNPREDICTABLE **PREPARATION MATTERS**

Last June's powerful storm was a reminder that severe weather rarely brings just one risk. High winds, lightning, extreme heat and dry conditions can combine quickly, creating dangerous and fast-changing situations. Storms can knock out power, damage infrastructure and increase wildfire risk, all at the same time.

KNOW YOUR RISK. MAKE A PLAN.

Preparation looks different for every household, but a plan makes all the difference.

- Consider special needs for pets, medical equipment or mobility challenges
- Build an emergency preparedness kit with essentials
- Plan for refrigeration of medications and backup power for medical devices
- Identify nearby storm shelters and know how to get there safely

DURING AN OUTAGE:

- Report outages or downed lines by calling our office at 218-444-2540; **DO NOT** report on social media
- Keep refrigerator and freezer doors closed to preserve food – if doors remain closed, a full freezer should hold its temp for 48 hours and a refrigerator for four hours
- Store drinks and bottled water in a cool place

GENERATOR SAFETY IS CRITICAL:

- Never use generators indoors or in enclosed spaces
- Keep generators away from windows and doors

PROTECT YOUR HOME:

- Turn off and unplug electronics to avoid surge damage
- Wait several minutes after power is restored before turning them back on

IF CONDITIONS ALLOW:

- Go to a safe alternate location for heating or cooling
- Check on neighbors, especially if communication is limited

AFTER THE STORM: STAY ALERT

Hazards don't end when the weather clears.

- Downed power lines
- Prolonged outages
- Damaged or blocked roads

IMPORTANT:

Treat all downed power lines as energized. Stay far away and report them immediately.

THE BOTTOM LINE:

Severe weather can change quickly, but preparation before, during and after a storm can help protect lives and property. Find more tips and resources at SafeElectricity.org.

EMERGENCY PREPAREDNESS KIT

- Flashlights
- Battery-operated radio
- Extra supply of batteries for flashlights and radio
- Portable phone charger
- Drinking water and non-perishable food (enough for 3 days), can opener
- Basic first-aid supplies
- Hand sanitizer
- Prescriptions, pain reliever
- Important documents
- Baby supplies and pet supplies if needed

Make sure all members of the family know where to find your kit.

Stay powered. Stay safe.

Power outages happen. Having a safe backup plan matters.

MEET GENERLINK.

A UL-listed transfer switch installed right at your meter that lets you quickly connect a portable generator to your home.

WHY IT MATTERS:

- Powers essential appliances during outages
- Works with generators from 4 kW to 10 kW (120/240 volts)
- No extension cords running through your home

BUILT FOR SAFETY:

GenerLink prevents dangerous back-feed onto power lines, protecting lineworkers and your home.

EASY TO USE:

We install it, and we'll show you exactly how it works so you're ready if the lights go out.

GET STARTED:

We're an authorized retailer. Contact us for pricing and installation details.

 **GenerLink**

SAFELY & AFFORDABLY POWER YOUR HOME WITH GENERLINK



Classifieds

Classified ads rules

- Ads are due by the following dates:
 - **JULY ISSUE:** Submit by June 4.
- Please submit ads here: beltramelectric.com/submit-ad.
- NO real estate, rental, personal or commercial ads will be accepted.
- All ads must be 50 words or less and typed or printed clearly.
- Editor reserves the right to edit or reject any ad.
- Ads are published at no charge as space permits on a first-received, first-printed basis, **with no guarantee your ad will appear.**

For Sale:

Homemade quilts: Block, Crazy, Star, Twin, \$50; Full, \$60; Queen, \$80; King, \$90. Lap, baby quilts, \$30. 218-243-2702.

Outdoor metal 5-piece dining table set: table, two chairs, two benches, center hole for umbrella. \$150. Also selling two Vintage sewing machines-one electric and one treadle, both come in original wood desk/cabinets. \$200 each. 218-368-4834.

Cedar dock: 80' x 4' in 10-foot sections. Frame 2" x 6", treated pine. Galv. poles 4'-7", caps, sand plates. Good cond. \$800. John Deere STX-38 Tractor: 38" cut, 2 bagger. Runs good, cuts well. Stored inside. \$800. Pics to share, on Big Turtle Lake. 651-492-6709.

Brand new Springfield M1A .308 auto rifle with scope. \$2,000/obo. 218-766-4595.

New in 2023, gray Duro PRO fabric F150 truck cover by Covers & All. 79.2" W x 231.9" L x 73.89" H. \$50. 218-766-7529.

1996 Harley Road King: 24,000 miles, fuel injection, lots of extras \$8,600. 1937 Jaguar Kit car VW motor \$3,500. 1937 Ford 2-door sedan fastback \$6,000. 1950 Willies pickup 6 cylinder OHV \$5,000. Or best offers. In Bemidji. 218-368-2430.

Louisiana grill barely used, some rust, \$1,000 new, make offer. Antique pump BB gun model 25, \$99, PSE Deer Hunter, like new, 45# left hand Plano case, Pillar lock 27 inch draw, six arrows includes case, barely used \$300. 218-586-2546.

Pride Lift Chair LC-470M, weight capacity 375 lb., user height 5'4" to 6', brown fabric, pillow back, remote control, professionally cleaned, \$250. 218-835-4276.

Kitchen sink white quartz composite, double-

bowl, top-mount drop-in, like new; used for one year, then replaced counters and bought an undermount sink, \$149. Men's golf clubs: Wilson #1, #2, #3 wood drivers, PGA Classic #5, #7, #9 irons, Kaylon putter, navy vinyl bag, light usage \$50. 218-536-1341.

Four 26" bicycles, 2 girls, 2 boys, \$75 to \$100 each. 218-556-2955.

2001 Lund Mr. Pike 17, 90 hp Johnson, depth finder, 1-pilot Minn Kota. 218-553-0346.

5x8 Pace American cargo trailer, clean, carpeted floor, free-standing shelving all around. Back doors, stored indoors, hitch lock, forever license. 218-751-5245.

1995 Sylvan model 16 SMB 16 Monster w/bow-mounted electric trolling motor, graph, extra battery. Has not seen a lot of use. S/N# SYL312191495. Very nice condition. Asking \$6,000 with trailer. New in box: Rocky II 7481 9" sport utility max boot, sz. 10. Was \$159.99, asking \$100. 218-368-0441.

Dexcom G7 Receiver. Brand new in box, never opened. \$40. 218-760-2984.

Casper orthopedic dog bed (new) 34x28, too small for mine, new sells for over \$200, will sell for \$75. Mike at 218-444-4767 land line no text.

2004 Time Out tent camper trailer w/storage space. Pull w/motorcycle, car, ATV, UTV. \$1,200/obo. Contact Jim 218-766-1204.

Antique glass door hutch w/fold-out secretarial desk, \$200. Log full-size bed frame, \$100. Warm Morning model 616 upright coal/wood stove w/fire bricks, \$150. 218-766-1758.

1994 Ford F250 XLT HD 4wd pickup, 5.8L gas engine, good tires, dark green, runs great, 187K miles. Clean interior. Located north of Bemidji. \$10,000. Call 218-766-0805. No texting.

Out building: 291 square feet, to be moved. 2 beds, up and main. Includes an antique wood cookstove, a solar panel and furnishings. Built in 2015, could be used for hunting or fishing shack. Asking \$20,000. 218-308-0949.

ShoreStation vertical boat lift 3600# capacity, Bemidji Lake. New Orbit veg garden soaker system \$20. Shark portable steam mop for every type of floor, cleans and sanitizes \$59. New cordless handheld vacuum with attachments. Ideal for counters, auto, upholstery, rechargeable base \$49. 320-583-0471.

Wine-making equipment and supplies. Includes bottle corker, fruit crusher, 4 fermenting pails, 4 4-gallon glass aging containers, bottle dryer, fruit press, filters, funnels, glass secondary fermenters, assorted supplies (corks, bottles, testing kits, filters). \$175/obo. Call 218-751-8746 and leave a message.

8' solid wood pool table with accessories and lamp. Slate top. \$2,000. You move. 218-556-0198.

Wanted:

RUNNERS! Start your Fourth of July at the Annual Downtown Dash 5K in Bemidji. This family-friendly event includes a 5K race and a free kids run, all supporting the Bemidji High School Cross Country team. Join the tradition and run for a great cause. Register at rnsignup.com/race/mn/bemidji/bemidjidowntowndash.

WWI/WWII/Vietnam; Cash for Flags, helmets, medals, uniforms, bayonets, binoculars, combat boots, etc. 218-371-6259.

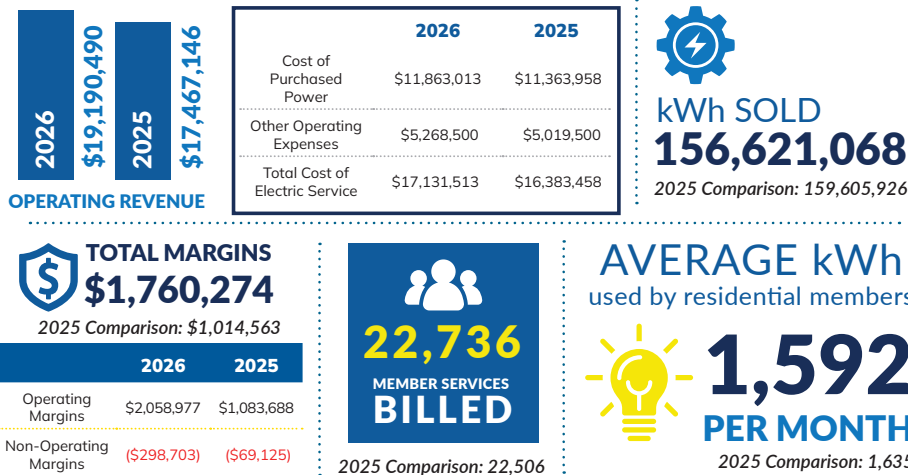
Apartment or small refrigerator. 218-766-4296 or 218-224-2768.

Free:

2010 Viewfinder pull-type tandem axle camper trailer. Roof and floor issues, but would make a great flatbed trailer, plus appliances. 2 5/16" ball. Call or text 218-214-2673.

BY THE NUMBERS | Q1 2026

Our leadership spends substantial time managing and providing oversight of the co-op's operations, including ensuring that the organization remains in a strong and stable financial condition. Below is an overview of our First Quarter Unaudited Financial Report.



JUNE READER'S CONTEST

For your chance to be entered in a drawing to **win a \$10 credit** on your bill, correctly answer the questions and include with your payment or mail to: BEC, P.O. Box 488, Bemidji, MN 56619. Or email answers to info@beltramelectric.com with the subject line "Reader's Contest." Be sure to include your name and BEC account number. **Entries must be received by June 25.**

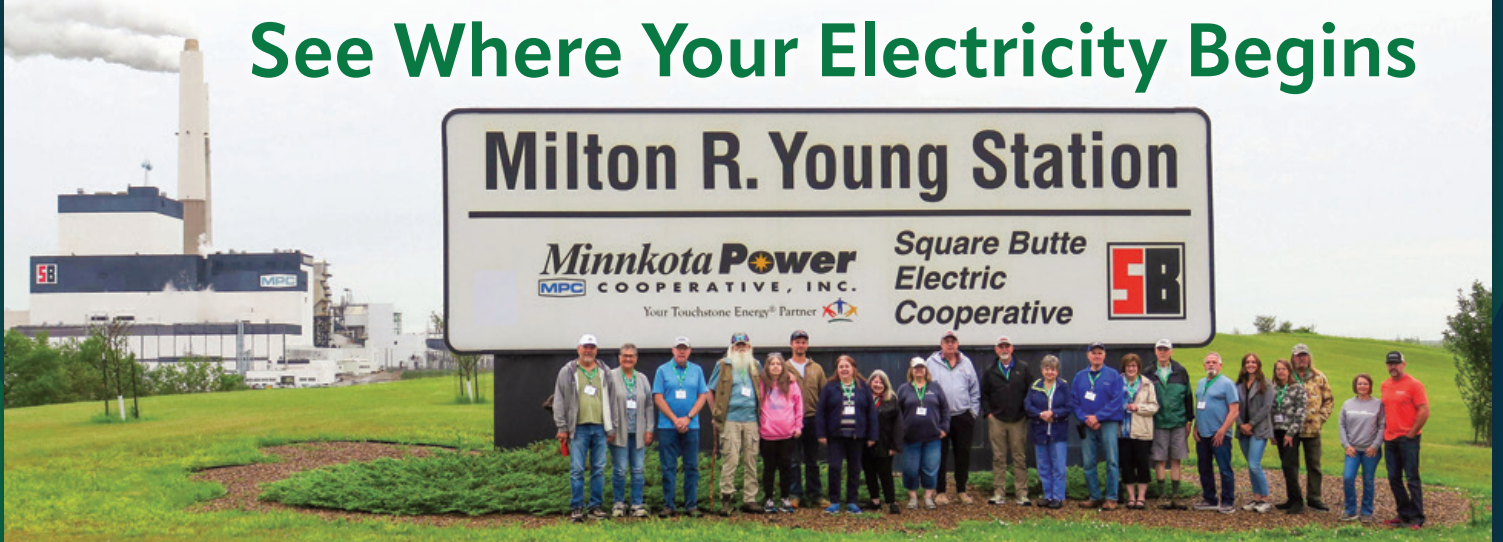
1. The Energy Resources Tour is planned for July _____ - _____, 2026.
2. Beltrami Electric's annual meeting will be held on _____ at the Beltrami County Fairgrounds.
3. If you use a generator, make sure to keep it away from _____ and _____.

Member Name:	BEC Account Number:	Email address:
--------------	---------------------	----------------

Congratulations to our April contest winner: Larry & Doreen Bessler

POWER UP YOUR SUMMER:

See Where Your Electricity Begins



What if you could follow your electricity all the way back to its source?

We invite our members and their families to join the 2026 Energy Resources Tour, July 21–23. This three-day trip offers a behind-the-scenes look at how electricity is generated and delivered across our region, combining hands-on learning with a memorable summer experience. Travel by charter bus from Bemidji, with a two-night stay in Mandan, North Dakota.

Tour Highlights Include:

- Minnkota Power Cooperative headquarters in Grand Forks
- Milton R. Young Station near Center, North Dakota
- BNI Coal's open-pit lignite mine (*weather permitting*)
- Ashtabula Wind Energy Center
- Lewis & Clark Interpretive Center and Fort Mandan

Who Can Attend:

- Beltrami Electric Cooperative members (*first-time participants prioritized*)
- Youth ages 12–18 attend free with a parent or guardian

Cost: (*Includes transportation, lodging, meals and all tour stops*):

- \$125 per person • \$200 per couple (*double occupancy*)

How to Register:

- Complete the registration form and return it with payment or sign up at our office. Space is limited and fills quickly. Members who have taken the tour before will be placed on a standby list.

Registration Form

Names of Participant(s):

(*Note age if under 18*)

BEC Account Number:

Mailing Address:

Email:

Telephone Number(s):

Dietary Needs (Ex. Gluten Free):

Mail this form with a check to: Beltrami Electric Cooperative, Attn: Energy Resources Tour, P.O. Box 488, Bemidji, MN 56619.

Tell Us How We're Doing

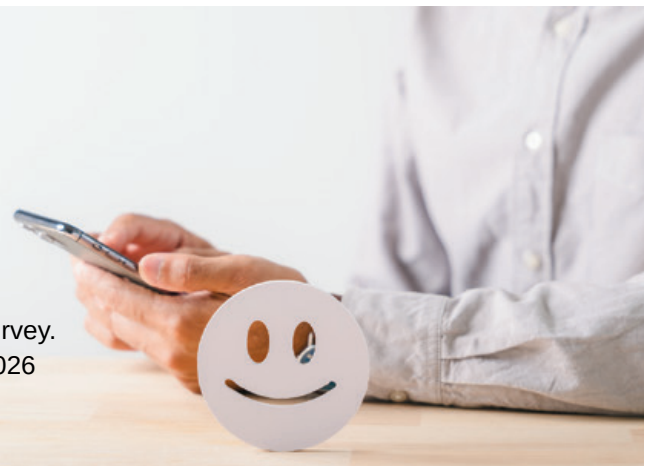
Your feedback helps guide our cooperative. We invite you to take a moment to complete a short **Member Survey**.

- It's quick - just five questions.
- Your feedback helps us improve our services to you and plan for the future.



Scan the QR code or visit the link below to take the survey.
Member Survey Link: surveymonkey.com/r/Beltrami2026

Thank you for sharing your feedback.





JUNE 2026 | VOL. 73 | NO. 6

Northern Lights (USPS 016488)

Published monthly by Beltrami Electric Cooperative Inc., 4111 Technology Drive NW, Bemidji, Minnesota 56601-5128. Subscription rate is \$5. Periodicals postage paid at Bemidji, MN 56601.

POSTMASTER: Send address corrections to Beltrami Electric Cooperative Inc., P.O. Box 488, Bemidji, Minnesota 56619-0488.

OFFICERS AND DIRECTORS

Chair John Lund, *DISTRICT 7*

Vice Chair Sue Kringen, *DISTRICT 8*

Secretary Murl Nord, *DISTRICT 1*

Treasurer Sharon Lembke, *DISTRICT 9*

Directors: Charlie Perkins, *DISTRICT 2*; Kevin Geerdes, *DISTRICT 3*; Craig Gaasvig, *DISTRICT 4*; Robert Wallner, *DISTRICT 5*; Rick Coe, *DISTRICT 6*

President and CEO Jared Echternach

Editor Angela Lyseng

Office Hours: 8:00 a.m. – 4:30 p.m.
Monday – Friday

Telephone: 218-444-2540 or
1-800-955-6083

Website: www.beltramielectric.com

Email: info@beltramielectric.com

MN STATE ELECTRICAL INSPECTORS

Any time you or an electrician does wiring or other electrical work at your home or farm, Minnesota state law requires a state wiring inspector to conduct a proper inspection of the work. A rough-in inspection must be made before any wiring is covered. A final inspection is also required. Find service territories for electrical inspectors here: <https://workplace.doli.state.mn.us/jurisdiction/>

BELTRAMI & HUBBARD COUNTIES:

Wade Koons | 218-580-8589
wade.koons@state.mn.us

CASS & HUBBARD COUNTIES:

Tony Kohrs | 612-770-1938
tony.kohrs@state.mn.us

GOPHER STATE ONE CALL

1-800-252-1166 or 811

www.gopherstateonecall.org



Anyone who plans to dig is required by law to notify the state of their intentions at least 48 hours in advance. All digging requires a 48-hour notification so that buried telephone lines, TV cable, pipelines, and utility electric lines can be located to ensure that none will be severed or damaged.

OUR MISSION STATEMENT

To provide excellent value to our members through the safe delivery of reliable electric service, excellent member service and innovative energy solutions at fair and reasonable prices.

This institution is an equal opportunity provider and employer.



VEGETATION MANAGEMENT NOTICE

Right-of-Way Foliage Treatment

What's happening:

Carr's Tree Service will be conducting selective vegetation treatment this summer as part of our routine right-of-way maintenance.

Where:

Eland, Kelliher, Shooks, Alaska (East), Port Hope, Summit, Wilkinson, Pike Bay, Lammers, Liberty, Lakeport, Shotley and Unorganized T152N townships

What to expect:

Targeted application of an EPA-approved, biodegradable herbicide to control unwanted trees, brush and noxious weeds that can interfere with electric service

What is the right of way (ROW)?

The right of way refers to a strip of land beneath and surrounding power lines that your electric cooperative maintains to keep the system safe and reliable. Trees and other vegetation must be kept a safe distance from power lines to prevent outages, reduce safety risks, and ensure crews have clear access for maintenance and repairs.

What's not included:

No treatment near gardens or regularly mowed areas

Why it matters:

This work keeps our right-of-way corridors accessible and helps maintain safe, reliable service for all members.